



**Celebrating 40
years of trading
worldwide**

£3.00



Gauge 3, Narrow Gauge, Buildings & Accessories Catalogue

2024

**Station Studio, 6 Summerleys Road, Princes Risborough, Bucks, HP27 9DT
Tel: 01844 345158 Fax: 01844 274352**

Email: sales@grsuk.com Web: www.grsuk.com

G64 (Gauge 3)

Locomotive Kits

GWR Locomotives

Class 2021 0-6-0 Pannier Tank (Nos. 2021-2160)

This class of engine was built at Wolverhampton between 1897 and 1905 and consisted of 140 locomotives, Nos. 2021-2160. The class was very similar to the 850 class but with a 12 inch longer wheelbase at the rear. Originally they were built as saddle tanks but by 1930 most had been fitted with pannier tanks. By 1944 only three had been withdrawn and by the start of BR 120 were still in service. 2069 was the last to be withdrawn in April 1958. The kit builds an electric model, and has two different cabs and bunkers, to allow a considerable variety of prototypes to be portrayed. It consists of three sheets of brass etch and one of nickel silver. The frames are laser cut steel with brass spacers. Prototypical wheels are manufactured by Slaters in glass reinforced nylon with stainless steel tyres, uses the standard PDG100 Buhler Motor Gearbox, and includes the AM2263 GWR Pannier Cab Detail Kit. The kit builds into an extremely well detailed and accurate model. Length 411mm, Width 110mm, Height 166mm.

EG1500 Class 2021 Pannier Tank Electric, Full Kit.



Dean Goods 0-6-0 Tender Loco (Nos. 2301-2580)

These locos were built by W. Dean from 1883 and lasted into the BR era in the mid 1950's. The kit is largely etched brass with laser cut steel chassis. Wheels with stainless steel tyres manufactured by Slaters, and our standard motor and gearbox geared 1:33 are included. Sprung steel tapered buffers, a full set of castings including brake gear and cab details are included along with full instructions.

Length 660mm, Width 105mm, Height 178mm

EG1510 Dean Goods Tender Loco, Electric, Full Kit.



Class 8750 0-6-0 Pannier Tank Loco (Nos. 8750-8799, 9711-9799, 3700-3799, 3600-3699, 4600-4699, 9600-9682, 6770-6779)

NEW KIT CURRENTLY IN DEVELOPMENT

These locos were introduced in 1935 by C.B. Collett and lasted well into the BR era. Our kit is an 'easy to build version' with a three piece resin loco body, which is simply screwed to the steel footplate with self-tapping screws. The brass and steel chassis bolts together and has a preassembled brass gearbox and



motor. The chassis is supplied with Slaters stainless steel wheels and sprung pickups. Numerous castings and a full boiler backhead give a good level of detail. Full instructions are included. Length 413mm, Width 113mm, Height 160mm.

CM1500 Class 8750 Pannier Tank, Electric, Full Kit.

Class 78XX Manor Tender Locomotive (7800-7829)

The 78XX class locos were designed by C.B. Collett in 1938 to fulfil the traffic department's requirement for a new blue route engine. Twenty were built in 1938-39, with remainder being built under BR in 1950.

The GRS kit uses our standard formula of laser cut steel chassis for loco and tender. Footplates for engine and tender are etched brass as are the loco cab and dummy tender outside frames. The boiler, including smokebox and firebox are resin castings. The tender body is a one piece casting. A new Slaters/Mabuchi helical drive motor/gearbox is fitted as standard on the Slaters insulated stainless driving wheels.

All the outside motion is either laser cut steel or nickel silver etch with brass castings. The safety valve is cast in brass with a bronze chimney.

A full set of instructions, and Photo CD are included.

Length 845mm, Width 123mm, Height 180mm.

CM1508 GWR
Manor Tender
Locomotive. Full
Kit.



LMS Locomotives

3F Tank Locomotive - NEW KIT CURRENTLY IN DEVELOPMENT

Whilst the origins of this loco can be traced back to the Midland Engineer Samuel Johnson, the LMS first introduced their version in 1931, 422 were built with large numbers being sub contracted to Vulcan, Bagnall and Hunslet. Seven saw service on the S & D.

Our kit uses a multi part resin body which, when assembled with 'Cyano' adhesive is then screwed to a steel footplate.

The chassis is laser cut steel with Slaters wheel sets. The GRS motor/gearbox is fully assembled. Steel sprung buffers, full brake gear, and cab detail parts are all included. The kit comes complete with instructions.

Length 242mm, Width 120mm, Height 173mm.

CM1510 LMS 3F 0-6-0 Tank. Full Kit.



4F 0-6-0 Tender Loco - NEW KIT CURRENTLY IN DEVELOPMENT

Designed by Henry Fowler, these engines were the last of a long line of similar classes of engines dating back from the 1880's. They were ubiquitous and permeated almost the entire LMS system and most lasted well into BR days. Our kit is one of the easy to build variety and consists of resin castings for loco and tender bodies mounted on a steel footplate. Whitmetal castings together with a full cab backhead pack ensure a well detailed superstructure. The chassis is made up of brass spacers with laser cut steel frames and coupling rods, which are easily bolted together. Slaters wheels with stainless steel tyres and a brass motor gearbox

geared 1:33 are included, along with plunger pickups and full instructions.

Length 725mm, Width 110mm, Height 170mm.

CM1514 LMS 4F 0-6-0 Tender Loco, Full Kit.



Southern Railway Locomotives

Stroudley Terrier A1X Class 0-6-0T - NEW KIT CURRENTLY IN DEVELOPMENT



unit. Wheels are fully insulated with screw fit axles. A full set of instructions are included. Length 340mm, Width 105mm, Height 158mm.

CM1520 SR Terrier A1X class 0-6-0T Loco Kit.

First built in 1872 and still in service 90 years later, these locos went through significant changes over this lifespan. For our model we have chosen the period of the 1930's. The kit, which has been designed as an easy to build one, with a three piece resin body mounted onto a steel footplate and buffer beams. The chassis is a screw assembled steel and brass structure with pre-assembled motor gearbox

SR (EX-SECR) 'N' Class Tender Loco

The first Maunsell 'N' Class loco emerged from SECR Ashford works in 1917. The first batch of fifteen locos were delayed by the First World War and were delivered between 1920-23. After the War the British Government ordered 100 locos from Woolwich Arsenal in 'kit form' to keep the workforce in employment, and in 1924 the Southern Railway purchased 50 of these for a bargain price. Various other railways purchased these locos as 'War Surplus' including the Metropolitan, which used them as a basis for their 'K' class 2-6-4T.

The GRS Mogul kit has laser cut steel chassis for both engine and tender. The loco and tender bodies are built mainly from etched brass. The boiler unit and cylinders are cast resin, the latter having nickel inserts. The Motion is laser cut steel and etched nickel silver.

The loco is powered by a Slaters/Mabuchi 1:40 helical drive motor gearbox. All wheel sets are the traditional Slater's stainless steel types.

The loco has numerous turned and cast brass fittings including sprung buffers. The kit whilst being reasonably complete does allow the builder to fit further

refinements of their choice, bearing in mind that the prototype went through various changes during its working life. Full instructions and CD of photographs is included.

Length 785mm, Width 115mm, Height 178mm.

CM1525 SR 'N' Class Tender Loco Kit



Passenger Coaching Stock Kits

SR Coaches



LSWR 51ft Kits

The LSWR produced blocks sets of non-corridor coaches from 1902-1912. By the early twenties the sets started to be broken up, often into pairs. The coaches were designed mainly to a 51ft length under-frame, but the composite was only 49ft. The kits are produced with First and Third injection moulded modules, enabling a composite to be produced. Fully sprung brass etch bogies with Mansell wheels by Slater's. Whitemetal underframe castings with sprung steel/brass buffers. Full interior detail and build instructions are included. Length 720mm, Width 118mm, Height 168mm.

SG1640 LSWR 51ft First/Third Composite Coach Kit

SG1641 LSWR 51ft Brake/Third Coach Kit

Non Passenger Coaching Stock Kits

SR

SR (Ex SECR) PLV/GUV 4-Wheel Van

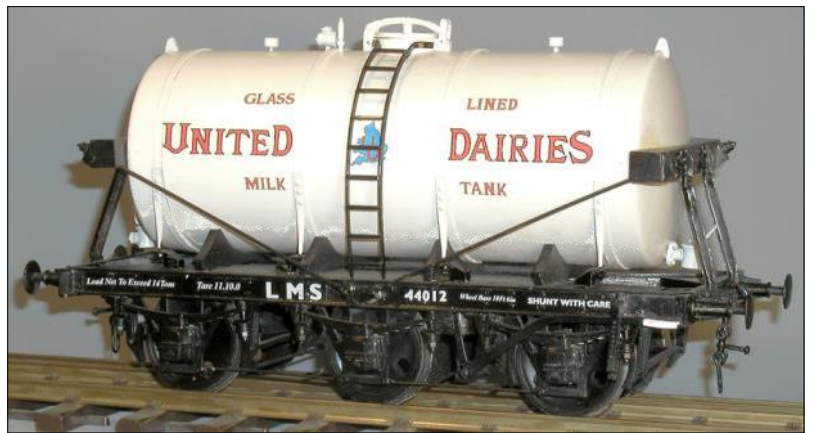
Large numbers of these 32ft 'Utility' vans were built from 1921 onwards lasting well into the BR era. Our kit represents a batch built by the SR in 1933. The body with solebar and buffer beams, is moulded in resin with a plastic floor and roof. Glazing simply slots in place. Underframe running gear is cast in whitemetal with insulated Slaters wheels. Full instructions are included.



Length 485mm, Width 118mm, Height 170mm. **CMDI630** SR PLV/GUV 4-Wheel Van Kit

LMS 6 Wheel Milk Tanker diag 1994 13' W/B

Introduced in 1931 after initial experiments with 4 wheelers had shown the need for greater stability, these 3000 gallon tankers were a common site on all regions of the UK well into the 1960's. The chassis is constructed in whitemetal with steel wheels and has a brass etch inside bearing centre axle unit to allow the axle to 'float'. The



body is made using an injection moulded plastic tank with plenty of whitemetal details. The tank rests on hardwood chocks preformed and cut to size.

DGI861 6 Wheel Milk Tanker

LNER

LNER Horse Box diag 5, code 8005 14' W/B 1938 York

Derived from a Great Eastern design principally for the carriage of race horses, this then formed the basis for the later BR vans. The kit features moulded resin sides and ends, including the solebars, internal partitions, plastic



floor and roof. Whitemetal castings are used to build the underframe detail. The axle boxes, brake gear are whitemetal with spring buffers. A small brass etch is provided to make the battery box and steps for this wagon. Screw couplings and vacuum pipes complete this very easy to assemble kit. Coach wheels, 49 mm diameter, are included in this kit.

CMDI892 LNER Horse Box Kit 14' W/B with wheels.

RTR Coaching Stock

Collett Coaches - Ready to Run

GWR CORRIDOR COACHES – Large window 'Sunshine' types introduced in the 1930's by C. B. Collett. As they were 8' 11" wide 'Yellow Disc' they could work widely across the country and lasted well into the B.R. period. Great care has been taken with design and manufacture of these coaches in the UK, with particular reference to the ease of building, to keep the labour costs low.

Third Class Corridor	DIAG C77 1938, 1940. 60' 11 ¼"
Brake Composite Corridor	DIAG E159 1938, 1941. 60' 11 ¼"
Corridor Composite	DIAG E158 1938, 1940. 59' 10"



CONSTRUCTION

Body is Laser cut aluminium, chromate primed, Roof is aluminium extrusion with channel profile for side location. The floor and Sole Bars are machined from Aluminium. Interior comprises of interlocking bulk-heads and 2.00mm plastic glazing. The underframe comprises brass angle trussing with cast battery boxes, vacuum cylinders and dynamo. Bogies are made from laser cut steel with white metal side frame castings and are complete with Slaters Wheels.

Available in GWR Chocolate & Cream (totem and post-war available) and BR early period. The coaches weigh in at 4Kg and length is 872mm for the Brake and Third and 858mm for the Composite.



3rd Corridor (8 Comp.) Dia. C77



Corridor Composite (7 Comp.) Dia. E158



Brake Composite (6 Comp.) Dia. E159

Freight Rolling Stock Kits

Resin Kits

These rolling stock kits with their moulded resin bodies, including solebars and buffer beams, offer a very easy to build solution. The axle boxes and brake gear are whitmetal with sprung buffers. Wheels extra unless specified otherwise.

Transfers NOT included unless marked *. Items marked + have a 1 piece body.

CMDI884 RCH 5-Plank 10' W/B Open Wagon +

CMDI885 LMS 20T BRAKE VAN +



CMDI884



CMDI885

CMDI887 GWR Toad Brake Van 20ton, Diag.AA2I +

CMDI889 GWR Lorient M, Machinery Wagon, 21' W/B Diag GI4 +



CMDI887



CMDI889



CMDI893



CMDI895

CMDI893 GWR Loco Coal Wagon, 10ton, 9' W/B, Diag N20 +

CMDI895 SR (Ex LSWR) Brake Van, 20/24ton, Diag I543, 13' W/B

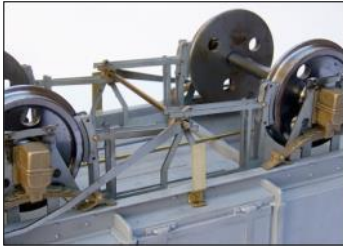
CMDI896 Oil Tank Wagon, 14ton, 10' W/B, (1939) +



GS100

16 Ton Steel Mineral Wagon + *

'Easy Build' with one piece moulded resin body, including steel wheels



GS100

Plastic/Whitemetal Kits

Scribed plastic bodies with whitemetal rivet and strapping overlay. Whitemetal chassis with sprung buffers. Wheels extra. Transfers **NOT** included unless marked *.

DG1809

GWR Conflat Wagon, 10' W/B, Etch detailing

DG1811

LNER/SR 1 Plank Lowfit Wagon, 10' W/B, Diag 109 (LNER)

DG1814

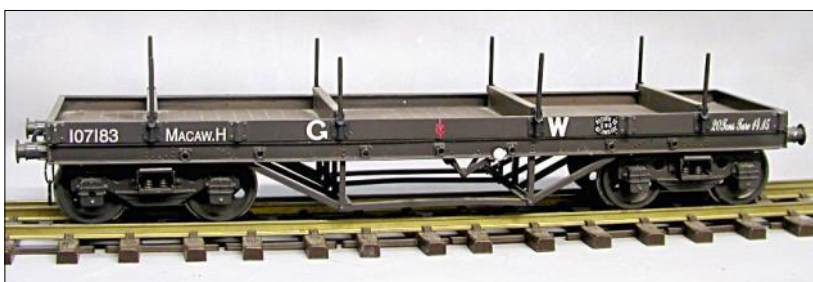
GWR Macaw H Bogie Flat Wagon *



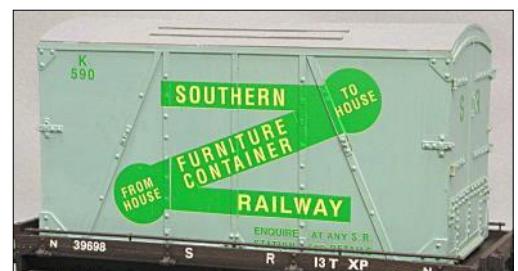
DG1809 + CM201



DG1811 + CM201 + SB382



DG1814



CM201 + SB384

One piece cast resin Containers

CM201

Furniture Container

CM206

AF Container – Insulated, 3ton

CM202

Shackles, Hanger, Chains etc for fixing Furniture Container Conflat

CM207

Shackles, Hanger, Chains etc for fixing AF Container to Conflat



CM206 + SB319

WaterslideTransfers

Waterside decals made to enhance our range of G64 Locomotives and Rolling stock.
See Freight Rolling Stock for some wagon transfer illustrations.

SB001	GWR Roundel Crest	SB314	GWR Fruit D 18' WB - diag Y11
SB002	GWR Shield Crest	SB316	GWR Gas Tank Wagon
SB003	BR Lion (late Crest)	SB317	GWR Lorient M / BR Lowmac WE
SB004	BR Lion (early Crest)	SB319	GWR AF Container
SB005	LMS Post WWII Crest	SB350	LMS 5 Plank Wagon
SB008	Great Eastern Crest	SB351	3 Plank Wagon
SB105	SR Terrier Locomotive	SB355	LMS 12t Box Van (Planked)
SB111	LNER N5 Locomotive	SB356	LMS 12t Box Van (Ply)
SB112	N5 Locomotive - BR	SB357	BR (ex LMS) 16t Mineral
SB114	BR Class 08 Diesel	SB358	LMS Cattle Wagon
SB113YR	LMS 2F Loco (Yellow Shaded Red)	SB360	LMS 20t Brake Van
SB116	SR 'O2' Class Locomotive	SB361	LMS AF Container
SB117	BR 'O2' Locomotive	SB377	BR AF Container
SB120	GWR Loco Set	SB379	BR 21 Ton Mineral Wagon
SB121	LMS Loco Set	SB380	NE 13T Steel Open
SB122	BR Loco Set	SB381	BR (ex LNER) Standard Brake Van
SB123	BR DMU Set	SB382	LNER Container 'Z' White Lettering
SB200	GWR Autotrailer A10	SB383	LNER 12 Ton Lowfit (1 Plank)
SB201BR	Siphon G Set - BR	SB384	SR Container 'Z' design
SB203	NE Horsebox	SB387	SR 4 wheel Pass Luggage/Parcels Van CCT
SB204	BR B Set (Brass Line)	SB388	NE Ventilated Refrigerator Van
SB205	SR (ex LSWR) Tri-Arc Coaches	SB389	SR Vans (Generic)
SB206	Wisbech & Upwell Coach	SB390	SR Conflat
SB207	LMS Stove 6 wheel NPC	SB509	Nestles Milk
SB208	LNER Teak Coach Set	SB510	Independent Milk Supplies
SB300	N E Tube Wagon	SB511	Chance & Hunt Salt Wagon
SB301	N E Ventilated Van	SB512	Saxa Salt Wagon
SB303	GWR Container (Brown)	SB515	Palethorpes Sausages (NYA)
SB305	GWR Toad Brake Van	SB517A	Shell BP Class A Tanker
SB306	GWR Shunters Truck	SB517B	Shell BP Class B Tanker
SB308	GWR 5/7 Plank Open Wagon	SB518A	Esso Class A Tanker
SB309	GWR Mica B Refrig Van	SB518B	Esso Class B Tanker (Large Letters)
SB310	GWR Mica A V 23 Van	SB518D	Esso Class A Tanker (Beige Tank)
SB311	GWR 12T Mink A Van - Ply	SB522	GWR Twin Milk Tank LCS
SB312	GWR Mogo Car Van		



G Scale Standard Gauge Wheelsets

Manufactured by Slaters these wheels use high quality materials. The tyres are turned from stainless steel bar, before being inserted into a die block. The wheel centre boss is a brass turning, and once this is added, the spokes are formed from glass reinforced oil resistant nylon under a high pressure injection moulding process. The finished wheels are quartered and fitted to the 1/4" diameter hardened steel axle by a countersunk machine screw. Supplied complete with Crankpins and Bushes.

Locomotive Wheels

		Previous GRS Code	Prototype Crank Throw	Crank inline or between spokes
G3836SW	3'-0" 9 Spoke Bogie Wheel	SLB30		
G3838	3'-2" 10 Spoke Bogie Wheel (GWR)	SLB32		
G3842	3'-6" 10 Spoke Bogie Wheel	SLB36		
G3844	3'-8" 10 Spoke Bogie Wheel	SLB38		
G3845	3'-9" 10 Spoke Bogie Wheel			
G3845D	3'-9" Disc Tender/Diesel Power Bogie Wheel	SLT39D		
G3849	4'-1" 12 Spoke Tender Wheel (GWR)	SLT415		
G3849GW	4'-1" 12 Spoke Driving Wheel	SLD415	10"	IL
G3851	4'-3" 12 Spoke Tender Wheel	SLT43		
G3851I	4'-3" 14 spk Austerity/J94	SLD43	11½"	PB
G3854LY	4'-6" 13 Spoke Driving Wheel (L&Y 500; LNWR Chopper tank)	SLD46B	10"	PB
G3855WP	4'-7" 14 Spoke Driving Wheel (GWR 57xx)	SLD47	10"	PB
G3861E	5'-1" 15 Spoke Driving Wheel	SLD50	11"	PB
G3862	5'-2" 16 Spoke Driving Wheel	SLD52I	10½"	IL
G3862GW	5'-2" 16 Spoke Driving Wheel	SLD52B	10"	PB
G3866	5'-6" 17 Spoke Driving Wheel (SR)	SLD56B	14"	PB
G3868W	5'-8" 18 Spoke Driving Wheel (GWR Mogul, Grange etc.)	SLD58B	15"	IL
G3872LY	6'-0" 20 Spoke Driving Wheel (L&YR Barton Wright)		13"	PB
G3872ST	6'-0" 19 Spoke Driving Wheel (LMS Class 5)		14"	PB
G3874G	6'-2" 18 Spoke Driving Wheel		13"	PB
	Available to special order			
G3830R	2'-6" 4 Hole Disc Diesel Wheel (Ruston & Hornsby)			
G3836ST	3'-0" 9 Spoke Bogie Wheel (Stanier)			
G3838I	3'-2" 11 Spoke Driving Wheel (Kerr Stuart)		10"	IL
G3838MW	3'-2" 10 Spoke Driving Wheel (Manning Wardle)		9"	PB
G3842/02	3'-6" 10 Spoke Driving Wheel (BR Diesel Class 02)		10"	PB
G3845ST	3'-9" 11 Spoke Bogie Wheel (Stanier)			
G3851ST	4'-3" 12 Spoke Tender Wheel (Stanier)			
G3854/08	4'-6" 14 Spoke O/C Driving Wheel (inc. cranks) (Class 08)	SLD46		
G3872GWH	6'-0" 20 Spoke Driving Wheel (GWR Hall)		15"	PB
G3881ST	6'-9" 21 Spoke Driving Wheel (LMS Stanier Princess Coronation)		14"	PB

Wagon and Coach Wheels

G3130M	2'-9" 8 Mansell Disc Coach Wheel	SLG707
G3120	3'-1" 8 Split Spoke Wagon Wheel	SLG702
G3121	3'-1" 8 Plain Spoke Wagon Wheel	SLG701
G3122	3'-1" 3 Hole Disc Wagon Wheel	SLG700
G3124G	3'-7" Mansell Disc Coach Wheel (GWR/LNWR)	SLG706
G3125	3'-7" Plain Disc Coach Wheel	SLG705
	Available to special order	
G3123	3'-7" 8 Split Spoke Coach Wheel	

or equivalent GRS PG700

Driving Wheel Accessories

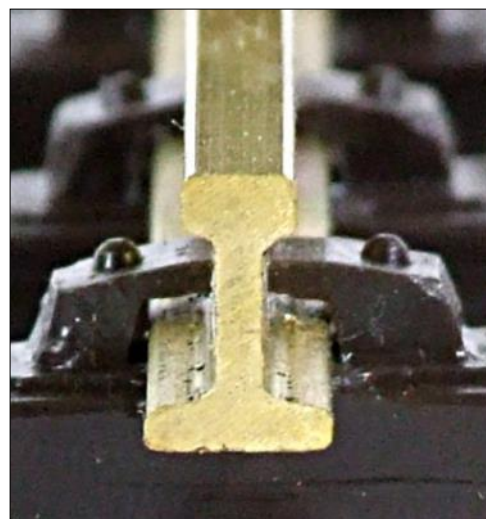
X98001	Allen Key for Gauge 1 and 3 (1/4" Dia.) Driving Wheels (2mm A/F)	SLG112
G3317	Countersunk Allen Screw (for 1/4" axles) with extension journal, 4mm dia. (Set 6) (requires X98001 Allen Key)	
G3802	Crankpin Set. 4 short, 2 long; includes bushes and nuts	
G3805	Crankpin Conversion Set. 2 'long' crankpins and 2 bushes to replace 'short' Version (in wheel packs) to take second rod	
G3806	Return Crank Set (turned crankpin, cast crank, screws). Pair	
	Gauge 3 standard axle 1/4" Diameter	SLA635
	Gauge 3 extended crank axle 1/4" Diameter	SLA535X

Gauge 3Track

G64 (63.5mm) Gauge Track and G64/45 (63.5mm/45mm) Dual Gauge Track

GRS G64 Track is manufactured in a UV resistant plastic safe for outdoor use and has full chair and bolt detail moulded onto the wood grained sleepers. The brass code 330 rail is of a flat bottom profile and identical to 'Tenmille' G Scale rail. The track will appeal to G Scale enthusiasts who have wanted to have some standard gauge in the garden to complement their narrow gauge models, as most narrow gauge railways in the UK had standard gauge interchange facilities at one time or another; e.g. Welshpool, Barnstaple, Blaeneau, Aberystwyth; whilst the L&M used transporter wagons and interchange buffer stops; all of which are now available in G Scale. The GRS G64 track also gives an easy to lay option to all those enthusiasts who just want to model standard gauge railways in 'Gauge 3', often previously referred to as 2½ inch gauge. GRS G64 track comes in two different versions, 63.5mm gauge and 63.5/45mm dual gauge, both with full wood-grained plastic sleeper base with chair and bolt detail. Both tracks are fully flexible as the sleepers are moulded in sets of four with linking webs, which can be cut for increased flexibility. Track packs contain enough bases to make five yards of track and are complete with rail joiners.

- SGI400** G-64 Sleeper packs to make 5 yards of track with 10 brass fishplates
- SGI401** G-64/45 Dual Gauge Sleeper packs to make 5 yards with 15 brass fishplates
- SGI402** Code 330 Brass Rail 1.5m length
- SGI403** Fishplates (10)
- SGI404** Rail Built Buffer Stop. Built with code 330 rail



Pointwork

Manufactured in LGB brass rail using hardwood sleepers, soldered staples and brass plates. There is a standard range usually available from stock: -

- IGI406L** 8ft Radius 12 degree angle, Left Hand
- IGI406R** 8ft Radius 12 degree angle, Right Hand
- IGI408L** 10ft Radius 10 degree angle, Left Hand
- IGI408R** 10ft Radius 10 degree angle, Right Hand
- IGI4010L** 12ft Radius, Left Hand
- IGI4010LR** 12ft Radius, Right Hand
- TIE123** 8mm Throw Point Lever Brass/Stainless Steel
- TIE001** Lever Frame Kit
- TIE004** 8mm Throw Point Lever Kit



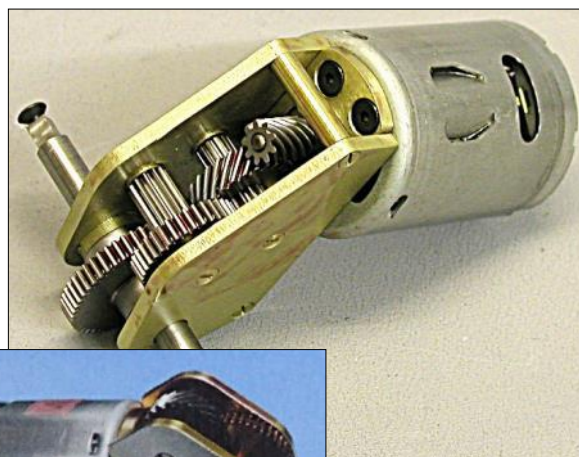
Custom trackwork

Sometimes the standard items stocked are insufficient for the desired layout and in these circumstances GRS can offer custom trackwork for both G64 and G64/45 (dual gauge). The items are constructed from code 330 rail stapled and soldered to hardwood sleepers and have included 3-way points, double and single slips and crossovers. Due to the many combinations available, quotations are given on an individual basis.

GRS/Slaters Electric Motor & Gearbox

SLGBG3

Motor & Gearbox for 1/4" axle 1:30 ratio



SLGB-50U

Motor & Gearbox for 1/4" axle 1:50 ratio



Narrow Gauge Electric Locomotive Kits

Prototype Locomotive kits

Manufactured by GRS for both 45mm and 32mm gauges

Tasmanian K class Beyer-Garratt 0-4-0+0-4-0 **NEW KIT IN PREPARATION**

The first two Beyer-Garratt's to be designed and built in Manchester in 1909 for the North-East Dundas Tramway line in Tasmania. They were unique amongst Garratts in being of the Compound type, a system not recommended by their designer, and having cylinders mounted at the inboard end of the power bogies. At the end of its service life, in 1947, K1 was repatriated to Gorton works where it was preserved until Beyer-Peacock closed the works in 1965. Now owned by the Ffestiniog railway



and returned to service after an extensive restoration in 2004, K1 can now be seen at work on the Welsh Highland line.

The kit is designed to be easy to build and comprises largely of a cast resin superstructure complemented by brass etches, sitting on top of two powered chassis of steel frames and brass stretchers which screw together with the addition of steel and Nickel-Silver valve gear. Length 512mm, Width 110mm, Height 175mm

CMR250 K1 Beyer-Garratt loco kit 45mm Gauge

CMR251 K1 Beyer-Garratt loco kit 32mm Gauge

Lynton & Barnstable 2-6-2 Tank Loco Kit

These L&B locos were built by Manning Wardle for the line opening in 1898 and named after West Country rivers Yeo, Exe and Taw. Modified over the years our model depicts the loco in its final form. It has a steel and brass chassis that bolts together for ease of assembly. Cast resin and Brass body with whitmetal detailing and full cab detail. Resin cylinders with cast brass cut steel valve gear. Slaters wheels and Buhler motor and 33:1 brass gearbox.



CMD260 L&B 2-6-2T Loco Kit 45mm Gauge

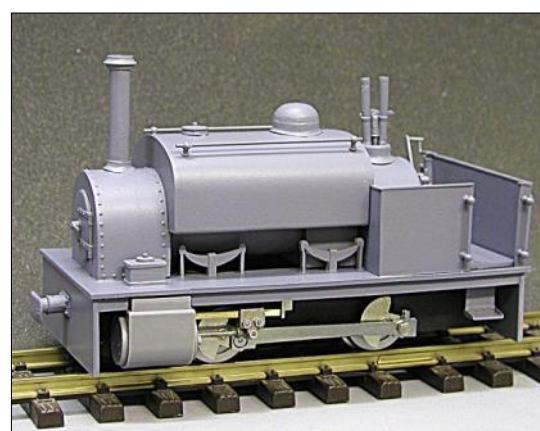
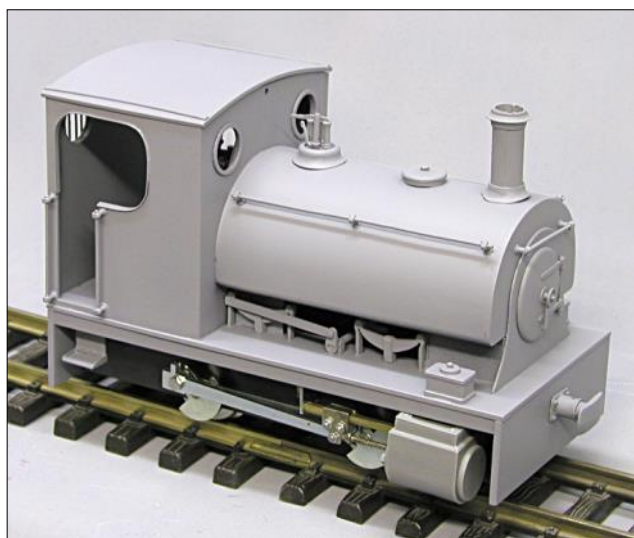
Freelance Industrial type 0-4-0 Body Kits

Made up of Cast resin Sections, pre-cut plastic, and whitemetal detailing parts, these three kits are easy to build and customise to your own requirements. They have been designed to fit the GRS G120 and G121 ready to run Chassis which can easily be adapted for battery radio control if required.

CMD235 Cabbed Hunslet Body Kit,

CMD236 Peckett Body Kit

CMD237 Quarry Hunslet Body Kit



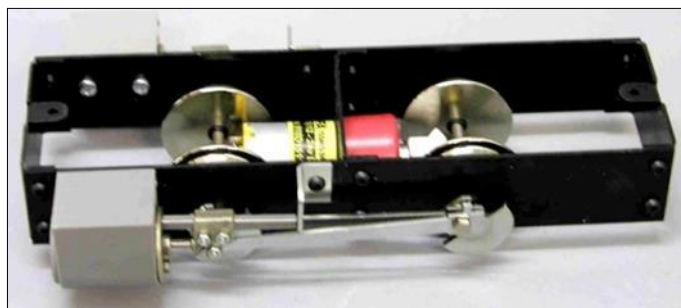
Ready to run 0-4-0 Chassis

Outside Steel Frames and insulated wheels, 6-18Volt motor and Nylon bevel gears, an optional pick up kit (**G122**) is available for those using Track power. Steam and diesel versions are available in 32mm and 45mm gauges.

G120/G121 45/32mm Steam Chassis

G114/G115 45/32mm Diesel Chassis

G122 Electric Pick Up Set for above Chassis



Locomotive Detailed Paint & Lining Service

GRS offer a Painting and lining service for your Live Steam or Electric Locomotives. The lining can be single, double or triple and is carried out using a bow pen and enamel paints. The finished product is painted to a very fine standard and adds an impressive look to your locomotive. Full details and quotations are available upon application.

Narrow Gauge Prototype Coaching Stock

Welsh Highland Railway Coach Kit

The prototype for this coach has been built by the Festiniog railway at Boston Lodge works. The model has a fully panelled resin moulded body with detachable preformed plastic roof. Seats are supplied to give a fully



fitted interior. Archbar whitemetal bogies with insulated steel wheels are included. Scale 16mm/1ft. Length 660mm.

CMA327 Welsh Highland Coach 45mm

Lynton & Barnstaple Coach Kits

Built to 16mm Scale this is the first time that British outline G scale plastic injection moulded coach kits have been available. The bodies of these kits comprise plastic side panels and ends with all beading and droplights present.



As the coaches are modular in construction, coach lengths can be reduced, variations can be made and freelance short coaches can even be produced. Gas lamp tops, ventilators, vacuum pipes, steps and bogies are all injection moulded and vacuum forming is used for roof and seating sections. Steel insulated wheels are included in the price of the kit, in either 45mm or 32mm gauge. As the side panels and ends are buff coloured, interior painting is not essential. Plastic running boards and wire for handrails are included. It is suggested that where LGB 2ft radius track is in use, the length of the coach is reduced by one compartment to six.

7 Compartment Length 572mm, Width 107mm, Height 152mm

6 Compartment Length 490mm, Width 107mm, Height 152mm

L & B Coach Kits

SG1001 Coach Third Class

SG1004 Brake/Third Class

End and Side Modules

Welshpool & Llanfair Light Railway Coaches



Modelled in 16mm.1ft scale these coaches are the ideal companions for the Earl or Countess Locomotives from Pearce or Accucraft. The coaches were supplied to W&L in 1902 by Pickering & Co. of Wisham, Glasgow. Two types were produced, a brake composite and a full third. Overall dimensions are the same for each coach. Length 535mm, Height 160mm.

The coaches are manufactured using injection moulding technologies to give the full detail of the body panelling. By use of a modular system of building, six side modules (three per side), two end modules and a floor, a rigid box structure is formed. Ideally this should be painted before adding the glazing. The domed roof is vacuum formed in styrene and has roof strengtheners, which also provide an easy means of fixing. End balconies are cast in white metal. The coach has compartment dividers and sets. Ventilators, steps and underframe details are also supplied. Bogies with 45mm gauge plastic wheels are supplied as standard. 32mm gauge converter wheels can be supplied at extra cost.

Coach Kit (Transfers not included)

SG1041 Full Third Coach Kit

NB203 Cambrian Waterslide Transfers (1909-23)

NB204 GWR Waterslide Transfers (1923-31)

Lynton & Barnstaple Freight Rolling Stock Kits

Built to 16mm scale, rolling stock manufactured mainly in plastic, some white metal parts in certain kits.

L&B Bogie Open Wagon with Tarpaulin Rail

The horizontal planking of the prototype has been faithfully captured on the model by means of scribed plastic sheet for the ends and sides, which form a rigid box structure.

The floor and solebar section are vacuum formed plastic. External details are added in the form of injection moulded parts with wire for the tarpaulin rail. The Kit version is supplied as a body kit without bogies or wheels. These are available separately for either 45mm or 32mm gauges (see General Parts section). Plastic bogies are also available from MDC or LGB (see relevant lists). Transfers are available separately. Length 440mm, Width 100mm.



SG1209 Body Kit

DG170 Whitemetal Bogie Castings 45mm or 32mm gauge (wheels extra)

NB322 Waterslide transfers Freight Stock white lettering

Lynton & Barnstaple BogieVan Kit

These GRS British Outline can kits are manufactured to 16mm scale in heavy duty plastic with full plank and rivet detail. Using a mixture of injection moulding and vacuum forming techniques. The floor solebar unit is fixed to two injection moulded ends and scribed plastic sides. A false roof then completes the rigid box structure. This is then detailed using injection moulded wood-style strapping to give the characteristics Lynton & Barnstaple bogie van finish. The kit also includes a preformed roof with strengtheners, truss rodding and brake gear. Bogies and couplings are not included but are available separately for 45mm and 32mm gauges. Length 435mm, Width 100mm, Height 145mm

SG1200 X BracedVan Kit

For bogies see L&B Bogie OpenWagon

Lynton & Barnstaple Bogie BrakeVan Kit

These BrakeVan Kits are of similar construction to those above, but are not the internally braced type with vertical planking. This is achieved with injection moulded parts and scribed plastic sheet. Parts for the guards compartment vary according to which type is chosen. Bogies and couplings are not included but are available separately for 45mm or 32mm gauges. Transfers are not included. Length 435mm, Width 100mm, Height 160mm

SG1205 ClosedType Kit

SG1206 OpenType Kit

NB322 Waterslide transfers – Freight Stock

For bogies see L&B Bogie OpenWagon

Leek & Manifold Freight Rolling Stock Kits

15mm/1ft scale.

Narrow Gauge Freelance Rolling Stock

Modular Coach Kits

Based on L&B modules these coaches offer enormous potential to the modeller who wishes to produce something different. Using the basic kit, one can produce a



very acceptable four compartment coach body quite easily. By purchasing extra parts such as guard's doors and duckets, one can then produce various guards type vehicles. Being modular in construction a whole variety of types of coaches can be constructed by the simple expedient of cutting and varying the position of the various modules. Various coach accessories, bogies and wheels are available

SG1010 Three Compartment Coach Body Kit, sides, ends, roof, floor and glazing

SG1008 Five Compartment Coach Body Kit, sides, ends, roof, floor and glazing

SG1009 Seven Compartment Coach Body Kit, sides, ends, roof, floor and glazing

SG1011 Full Brake Body kit, sides, ends, roof, floor and glazing



Sample 4 Compartment Coach

FreelanceW&L Open Balcony Coach kit

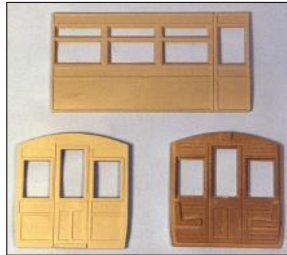
Based onW&L modules this plastic kit contains injection mouldingW&L coach side & end modules with all the bolection detail and tumblehome preformed (illustrated underVW&L Coaches). The roof and trusses are vacuum formed and the floor is pre-cut for easy fitting. Glazing material, rubbing strips and underframe trusses are included together with plastic

bogles and wheels (45mm gauge). Wheels can be re-gauged to 32mm if required. Couplings are not included. Length 385mm, Width 100mm, Height 157mm.

SG1048 Freelance Open Balcony Coach Kit

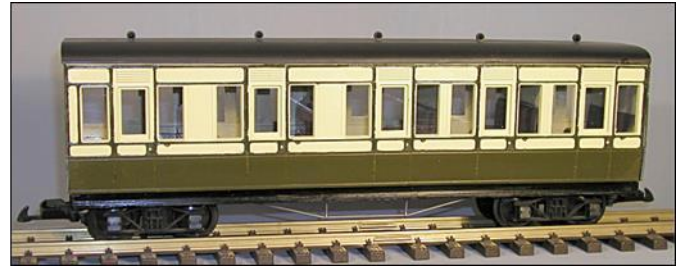


SG1053 Freelance Balcony Brake Coach Kit



Freelance 1900's Modular Coach Kit

Based upon 1900's stock these coach modules make up a body in a very similar way to the L&B modules. However, this time they incorporate a tumblehome and offer a choice of two compartment sides using two different modules. The kit includes ten of each module, four ends, glazing, floor material and two roof mouldings, 430mm long which can be cut to suit, to make two coaches.



SG1049 Freelance Coach Body Kit, First/Third

SG1050 Freelance Brake Coach Body Kit

SG1051 Guards Van Parts (Double Doors, Duckets, Plain Panels)

Stuart Coaches - Produced exclusively by GRS

Rugged & beautifully engineered, powder coated steel construction, glazed and fitted with seats, supplied ready to run with a choice of 32 or 45mm Stainless steel wheels in robust moulded bogies fitted with loop & hook couplings.



SW114 C&M #1



SW115P L&M 3rd (Primrose livery)



SW127 Welsh Highland 3rd #2041



SW116P L&M Brake Compo. (Primrose livery)



SW128 W&L Coach

Slaters 32mm Gauge DrivingWheels

Stainless Steel tyres with nylon filled plastic centres, self quartering onto square ended axles and using a countersunk hex-head screw to secure them in place. Extended axle types have the outside cranks fitted to the axle in a similar way, with a wheels an interference fit onto a machined shoulder.



Exclusive to GRS ; -

SLD375A/B 37.5mm dia. 10 spoke, crankpin between spoke for inside frames, in 45mm & 32mm Gauge

SLD440A/B L&B type, 44mm dia. 8 spoke, for outside frames, in 45mm & 32mm Gauge



Other Slaters Driving, Bogie, and rolling stock wheels can be supplied to special order.

I6816B 1'4" Disc BogieWheel

I6817MR 1'5" Disc Driver (Simplex)

I6818H 1'6" Disc BogieWheel

I6820H 1'8" Disc Driver O/C (Quarry Hunslet)

I6821T 1'9" Filled Spoke TrailingWheel (Tallyn)

I6824FR 2'0" Spoke Driver (Fest. Small England)

I6824H 2'0" Spoke Driver (VD Hunslet)

I6828T 2'4" 'Filled' 8 spoke Driver (Tallyn)

I6832FR 2'8" 3 Hole Driver (Fest. Fairlie)



I6817MR



I6820H



I6824FR

Stocked range of Slaters 32mm Gauge, 16mm scaleWheels

I612DIN

Dinorwic Quarry
1'-0" wagon wheels;
6 curly spokes



I612DUB

Dinorwic Quarry
1'-0" double flanged wagon
wheels; 6 curly spokes;
4 wheels on 4 stub axles



SI618FRC

Ffestiniog Railway
1'-6" wagon wheels;
6 curly spokes.

I1615WD

War Department
1'-3" wagon wheels;
7 curly spokes



I618FRD

Ffestiniog Railway
1'-6" wagon wheels;
3 oval hole disc.



I618FRW

Ffestiniog Railway
1'-6" wagon wheels;
6 web spokes



I620GVT

GlynValley Tramway
1'-8" wagon wheels;
6 curly spokes.



I622GVT

GlynValley Tramway
1'-10" wagon wheels;
7 curly spokes.



I623WE

Welshpool & Llanfair
1'-11" wagon wheels;
6 hole disc.



SLG632 45 Gauge, 30.5mm Dia. 10 Spoke

Designed to replace
LGB wheels 67319.
Stainless Steel Tyres
and Nylon
reinforced centres, 2
axles per pack



GRS Manufactured Wheels

Steel wheels, hub insulated

CNC lathe turned wheels, in a choice of gauges, diameters, and journal size. Blackened versions also available. Use B suffix for blackened versions.

32mm Wheelsets

PG500/B	24.5mm Diameter	2mm Journal
PG502/B	24.5mm Diameter	3mm Journal
PG504/B	28.0mm Diameter	3mm Journal



PG500



PG504

45mm Wheelsets

PG600/B	28.0mm Diameter	3mm Journal
PG604/B	24.5mm Diameter	3mm Journal
PG606/B	24.5mm Diameter	2mm Journal
PG610/B	30.5mm Diameter	3mm Journal



PG604



PG610B

LETTER & NUMBER SETS



AAAAABBC
 CDDEEEEEE
 FFGGHHHHH
 IJJKKLLLM
 MNNOOOOP
 PQQRRRRRS
 SSSTTTTUU
 VVVWWYYZ

13021 • 20mm White Sans Serif Lettering

LB001

NARROW GAUGE

NB101

L&B (Southern) Lyn

NB202AN

L&B Style Alpha-Numeric Set

NB203

W&LLR 1909-1923 (Cambrian)

NB204

W&LLR 1923-1931 (GWR)

NB204AN

W&LLR GWR Style Alpha-Numeric Set

NB206

2008Welsh Highland Railway Coach Set

NB322

L&B Freight Stock

AMERICAN & MISCELLANEOUS

AB006

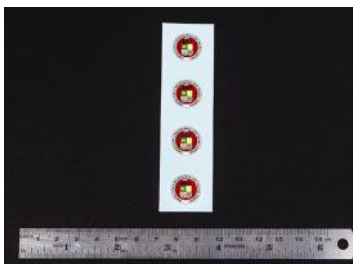
C&S 27ft Reefer 585-599

ABO II

D&RG Reefer 32-81 Series

XB005W

0.5mm, 1.0mm & 1.5mm Lines -
White



NB001



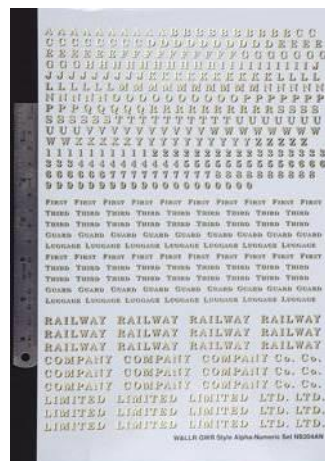
NB004



NB007



AB003S

**NB204AN**

NB101



NB206

Building Kits

Yarwood Prototype Building Kits (Designed by David Yarwood.)

A range of unpainted buildings made from fibre-glass, resin and plastic.

YG601 Caersws Station

This superbly detailed model reproduces the authentic stone construction with slate roof. Also featured are finely etched brass bargeboards to the gable ends.

Height 300mm, Length 680mm, Width 135mm.



YG602 Watlington Station

The original building was of stone and knapped flint construction with a slate roof. The model recreates many of the fine features Found in the original.

Height (inc. Chimney) 270mm, Length 442mm, Width 182mm.



YG629 Dinas Signal Box

The original building featured wooden weatherboard construction with a slate roof, faithfully reproduced on this model, along with detachable simulated stone base, allowing the signal box to be used as either a ground frame or platform version.

Height 265mm, Length (excluding porch) 185mm, Width 150mm.



YG631 Watlington Signal Box

The model features simulated vertical boarding and felted roof, and includes entrance steps for side doorway.

Height 215mm, Length 175mm, Width 165mm.



Lynton & Barnstaple Railway Buildings Kits

Due to their size in G Scale some are reduced to help enthusiasts with limited space.

YG603 Woody Bay Station

A well detailed model of the preserved L&B station built in Nuremberg style with interesting roof angles capturing the flavour of the prototype.

Height 275mm, Length 620mm, Width 305mm.



YG609 Chelfham Station Kit

A small station building of stone construction with a tiled roof and distinct barge boards.

Height 166mm, Length 323mm, Width 167mm.



YG615 Lynton Goods Shed

A typical stone and slate building with wooden doors and canopy. Reduced in length to only one loading bay instead of two. Height 265mm, Length 470mm, Width 320mm.



YG637 Pilton Signal Box (Freelance)

Timber frame building on a stone base. Tiled roof with 4-pane windows.

Height 235mm, Length 185mm, Width 160mm.

YG636 Barnstaple Signal Box

Timber frame building on a stone base. Slate roof with 6-pane windows.

Height 235mm, Length 185mm, Width 160mm.



Freelance Building Kits

Station Halt

This building has a side shelter for passengers. Height 230mm, Length 310mm, Width 160mm.

YG612 Open Shelter Kit



YG625 Engine Shed with WaterTank

Gabled roof over a brick engine shed with climbing ivy and weathered all over.

Overall Height 290mm, Length (doors open) 410mm, Width 230mm, Entrance Width 130mm, Door Height 185mm.



Lineside Hut with Chimney

Finished with either, wooden walls and corrugated iron roof or simulated stone walls with felt type roof. Height 130mm, Length 170mm, Width 145mm.

YG617 Wooden Hut Kit

YG618 Lineside Stone Hut Kit

YG619 Goods Office/Weighbridge Hut

A typical example of a small railway building constructed in stone and slate used for various purposes.

Height 240mm, Length 175mm, Width 145mm.



YG630 Loughborough Signal Box A faithful model of the GCR Box still

being used by the heritage railway to this day, but equally typical of many Wood and Brick structures used all over the UK. Height 260mm, Length 365mm, Width 160mm.



**Ready
Built**



YG630

YG670

Buildings

Manufactured by David Yarwood from exactly the same materials as the kits, but supplied built and painted.

YG665 Water Tower 75mm x 75mm x 268mm

YG666 Signal Box with Steps 185mm x 115mm x 280mm

YG667 Signal Box Small 165mm x 110mm x 190mm

YG668 Ticket Office 160mm x 130mm x 150mm

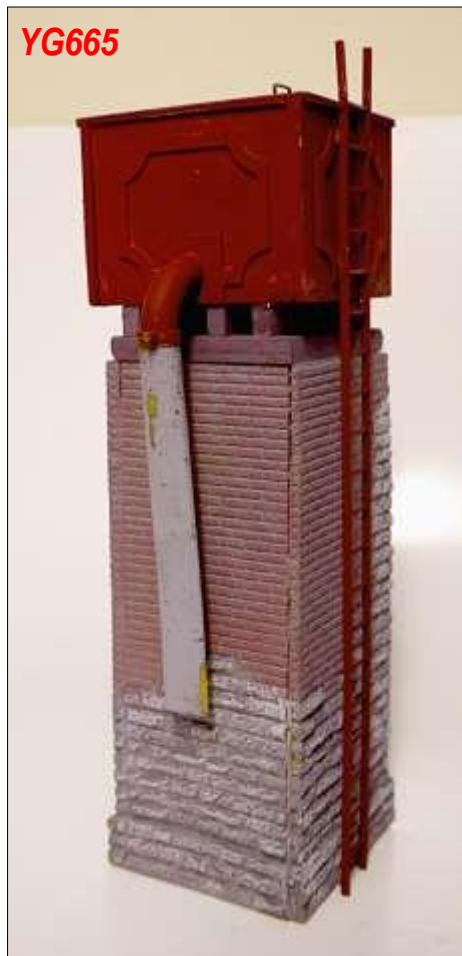
YG670 Ticket Hut & Shelter 290mm x 130mm x 150mm



YG671

YG671 Shelter 160mm x 130mm x 150mm

YG672 Platform Signal Box 120mm x 110mm x 175mm



British Outline Building Kits

This range of kit is designed to create the atmosphere of railway buildings in all the areas of Great Britain. They are robustly made from fibre-glass resin, are weatherproof and easy to assemble and paint. There is a great deal of detail, which will stand up to close inspection. Suitable for narrow or standard gauge.

BO05 Gresford Station (Stone)

Based on the prototype this station has several interesting architectural features including a gabled roof, and end bay window. Height 285mm, Length 560mm, Width 240mm.

BO06 Evergreen Station (Stone)

A typical small English design built in stone, a smaller version of Gresford but without canopies.

Height 275mm, Length 540mm, Width 230mm.



BO07 Station Annex (Stone)

This small annex complete with interconnecting wall section could be used to upgrade your station's facilities or as a porter's office etc. Made to match Evergreen Station.

Height 225mm, Length 195mm, Width 170mm.



BO09 Small Country Station (Brick)

A typical small English design.

Height 270mm, Length 380mm, Width 240mm.



BO10 Country Station (Brick)

This station may be found from the commuter belts of London, to the countryside of Wales. A small selection of name boards and signs is supplied. The platform canopy is removable for Winter storage.



Height 350mm, Length 540mm, Width 290mm.

BO11 Station Waiting Room/Porters Hut/Toilets

An addition to the station or a small building on its own, perhaps a Crossing Keepers Hut, complete with outside chimney breast and tall chimney. Choice of signs supplied.

Height 260mm, Length 180mm, Width 170mm.

BO22 Station Terminus Over-Canopy

This imposing over-canopy is typical of those found at larger terminus stations and is dated around the 1960's so has a more modern image. Produced in a brick finish to match BB10.

Height 320mm, Length 540mm, Width 55mm.

BO17 Footbridge

A concrete type footbridge with brick stairs

similar to those found on many British railways. Length 510mm, Overall Height 2145mm, Length of Staircase 150mm, Width of Staircase 69mm, Track Clearance Height 170mm.





PPG205 GWR Type Lattice Footbridge

Suitable for double track. Flat packed etched brass with plastic supporting columns. Decking and steps etched to represent wooden planking as used on prototype. Rivet detail included on vertical side frames. Easy fold up construction mainly bolted with minimal soldering required. Footprint 715 x 305mm. Width Between Staircases 560mm, Centre Clearance Height 210mm.

BO12 Signal Box (Brick)

A typical design to be found almost anywhere. The kit comes with a choice of corrugated tin or slate/tiled roof and brick or metal chimney. The windows can be assembled open or closed swivelling, tilted or sliding. This same versatile kit allows several variations around your railway. Name boards supplied.

Height 310mm, Length 190mm, Width 135mm.

Goods Office

Typical of the 'found everywhere' office/stores – this one might be off the end of Newbury Racecourse GWR station anytime 1900-1960. Tin roof, brick and metal chimneys included.

Height 250mm, Length 180mm, Width 155mm.

BO13 Goods Office (Brick)

BO21 Goods Office (Stone)

BO14 Signal Box & Goods Office Set (One each of BO12 Signal Box & BO13 Goods Office)

BO16 Junction Signal Box

A typical medium sized signal box, built in brick with slate roof and outside stairs. The latter can be as illustrated or parts are included to make an alternative wooden staircase.

Height 320mm, Length 205mm, Width 170mm.





BO18 Water Tower

A typical rectangular, brick based, metal tanked water tower found in profusion all over the British Railway system at one time. Height 310mm, Length 190mm, Width 110mm.

BO23 Lineside Hut/Small Office

Small common-place building with tin roof used as yard offices, shed offices, paint stores, crossing keepers huts, etc.

Height 144mm, Length 120mm, Width 85mm.



BO19 Engine Shed

Typical brick built Engine Shed. A typical design of single bay shed to be found anywhere in the British Railway scene. Height 280mm, Length 362mm, Width 220mm. (Also **BO75 Double length version**)

BO70 Engine Shed Extra Height Kit

(Eight components, moulded in stone finish to give extra 25mm height to Engine Shed **BO19**)



BO20 Goods Shed

Typical brick built Goods Shed that was found over the entire British branch line railway scene.

Height 270mm, Length 362mm, Width 220mm.



BO71 Goods Shed Extra Height

A kit of nine components, moulded in stone finish, to give extra 25mm height to all walls of Goods Shed BO20. A set of additional steps are also included.

BO56 Station Garage

This typical motor garage has been converted from the old horse stables adjacent to the coal yard. Height 190mm, Length 240mm, Width 170mm.



BO50 Diesel Refuelling Point

A common sight for any railway running diesel locomotives. Diesels can't do without them!

Height 150mm, Length 185mm, Width 80mm.



BO55 Station CoalYard Office

Hundreds of these offices

were to be found in goods yards all over England.

Height 190mm, Length 180mm, Width 160mm.

(Note: Coal sacks cast in resin available separately)



BO61 Complete Halt Kit

Complete narrow gauge kit of Open Halt, Ground Frame, Flower Bed and Water Tank.

BO61A as **BO61** but with 16mm Doors

BO65 Bridgend Halt

A narrow gauge signal box mounted on a stone base with slate roof, wood planking walls and gable end tile hanging. Suitable for 16mm. Height 210mm, Length 150mm, Width 150mm.



BO66 Narrow Gauge Halt and Shelter

A narrow gauge waiting room and shelter with post box let into the wall and a bench seat in the waiting shelter.

Height 210mm, Length 250mm, Width 205mm.



BO76 Sign & flower bed

B067 Narrow Gauge Water Tank

A narrow gauge round water tank mounted on stone walls and a brick plinth complete with door (non-operational) for access beneath tank.

Height 215mm, Length 135mm, Width 80mm.



B068 Coaling Stage & Sand Store

A two part kit comprising coaling stage and sand store, moulded in resin, suitable for a small engine stabling point.

Height 85mm, Length 350mm, Width 135mm.



B069 Weighbridge

A weighbridge was a common feature in railway freight yards until fairly recent times. The resin kit is supplied with weighbridge building, weighing plate, gutters, drain pipe and coal sack. The approach to the weighing plate is cast in cobbled stone. A cast 'Weighbridge' sign is included and a 'Coal & Scrap Merchants' sign is moulded into the rear wall.

Weighbridge Hut Base 300 x 150mm, Weighbridge Plate 320 x 140mm. Kit also includes a length of rail for edging of the weighbridge plate.



B072 Platelayer's Wooden Hut Kit

A kit of 6 resin parts with hinged roof. The building reproduces the gangers' life, the scythe for cutting the embankment grass and sharpening wheel. Typical rubbish lies on the roof and shutters cover the windows.

Height 115mm (excluding chimney), Base 210 x 140mm



B073 Platelayer's Stone Hut Kit

A kit of 6 resin parts with hinged corrugated iron roof. Fire in disused oil drum is adjacent to door. Typical rubbish lies on the roof and wooden shutters cover the windows.

Height 135mm (excluding chimney), Base 200 x 170mm.



Railway Terraced Cottages

Typical of the Signaller's or Crossing Keeper's dwelling, this standalone kit can also be formed into any number of terraced houses, as seen in railway towns such as Reading, Swindon, Crewe, Doncaster etc. Street names supplied.

Height 330mm, Length 183mm, Full Relief Width 156mm, Half Relief Width 82mm.

BO30 Terraced Cottage (Brick)

BO31 Terraced Cottage (Brick/Flint)

BO38 Terraced Cottage (Stone)

BO45 ½ Relief Terraced Cottage (Brick)

BO46 ½ Relief Terraced Cottage (Brick/Flint)

BO47 ½ Relief Terraced Cottage (Stone)

BO32 ½ Relief Terrace Cottage x 2 (Brick)

BO37 ½ Relief Terrace Cottage x 2 (Brick/Flint)

BO39 ½ Relief Terrace Cottage x 2 (Stone)

BO49 ½ Relief Terraced Cottage (Inside Corner)

BO33 ½ Relief Terraced Cottages with Backyards



Typical of all railway approaches to industrial towns. The rows

and rows of backyards typified in television's Coronation Street. Street names supplied.



Height 330mm, Length 360mm, Width 220mm.

BO15 Station Master's House

This kit consists of a Railway Terraced Cottage (**BO30**) with the centre part of the backyard extension of **BO33** attached to the rear.

Height 330mm, Length 183mm, Width 315mm.



BO64 Waiting/
Porters Hut

BO63 Lineside
hut



Height 180mm, Length 180mm, Width 150mm.



BO36 ½ Relief Corner Shop

Height 325mm, Length 250mm, Depth 80mm.

Corner Pub 'The Railway Tavern'

Typical brick built English pub.
The kit can be used with the cottages to form a corner at the

end of a terrace. Available in full or half relief.

Height 325mm, Length 250mm, Width 250mm. 80mm.

BO34 Corner Pub

BO35 ½ Relief Corner Pub

Terraced Shops

A variety of brick built terraced building kits that can be placed together or mixed with terraced cottages (see diagram above).

BO51 Terraced Shop

BO52 ½ Relief Terraced Shop

BO53 Double Fronted Terraced Shop

BO54 ½ Relief Double Fronted

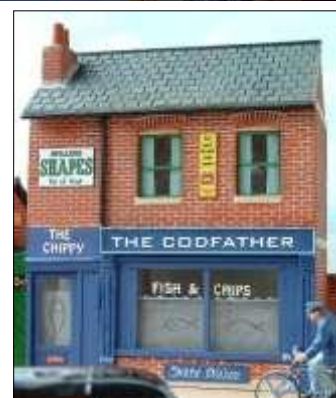
Terraced Shop



BO60 The Codfather Fish & Chip Shop

Brick built Fish & Chip shop which can be placed together with other shops or incorporated into the range of terraced cottages.

Height 330mm, Length 270mm, Width 156mm.



BO57 Welsh Farm Cottage

A typical farm labourer's

stone cottage with slate roof from North Wales. The cottage has a porch and a lean-to for wood etc. It can be finished in a number of styles to give variation.

Height 190mm, Length 260mm, Width 146mm.

BO59 Terraced Farm Cottages

Similar to the Welsh Farm Cottage, but now available as a terraced set. Complete with a lean-to at the rear.

Height 200mm, Length 500mm, Width 146mm plus 80mm lean-to.



BO58

Black Boy Inn

15th Century Inn based on a real pub in Caernarvon dating from 1922 and known locally as The Bachgen Du. This resin cast kit has over twenty components, and is well detailed including window boxes and hanging baskets and transfers.

Height 300mm, Length 600mm, Width 200mm.



BO40 English Church

A typical random stone church moulded in resin. Complete with tower and optional spire. Printed glazing is included.

Height 340mm, (with spire 535mm), Length 380mm, Width 245mm.

BO41 Windmill

Based on the preserved smock mill at Lacey Green in Buckinghamshire.

Height 480mm,
Height to top sail 770mm, Width 300mm.



BO78 Watermill

A typical country overshot watermill with turning wheel. Just add a stream!.

Height 480mm, Height to top sail 770mm, Width 300mm.





BO44

Thatched Cottage

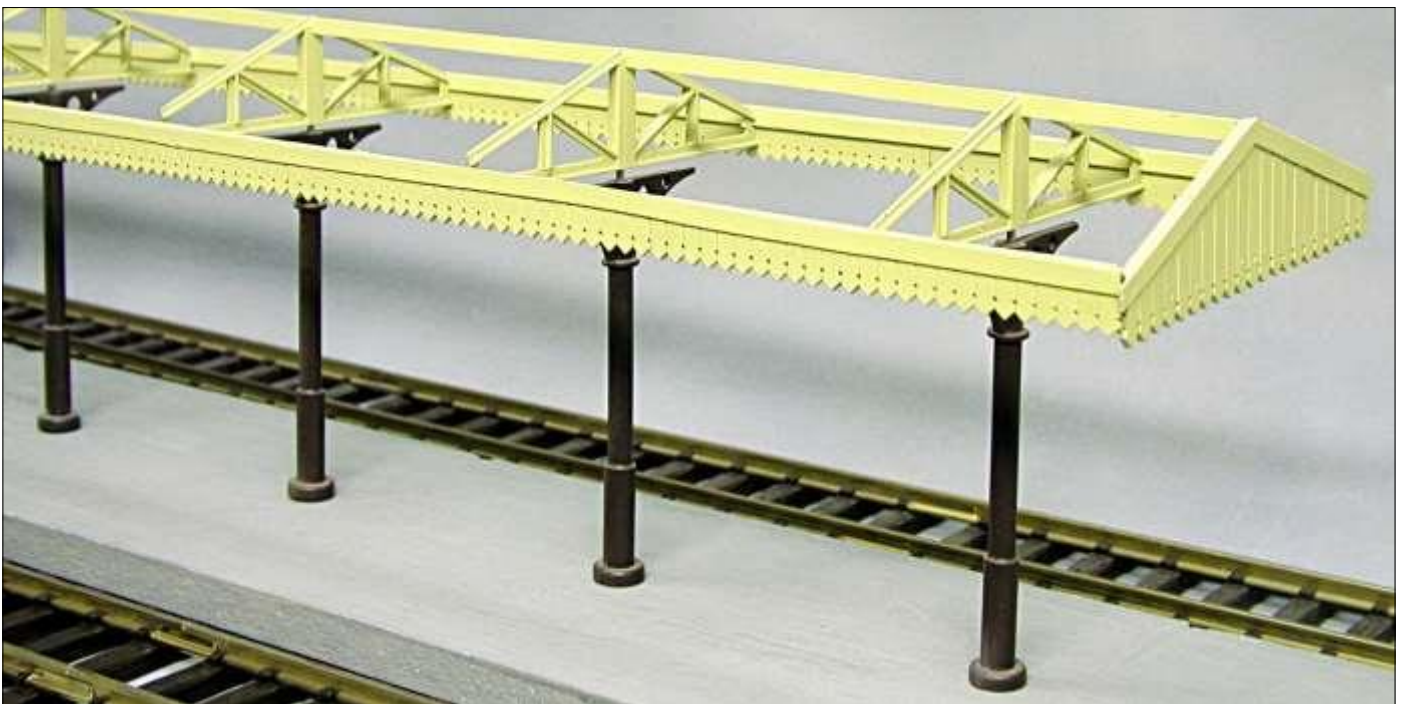
A typical half timbered cottage,

Height 340mm,
Length 300mm,
Width 200mm.

(Also **BO43** Terraced cottages, as BO44, but 490mm wide)



Station Canopy



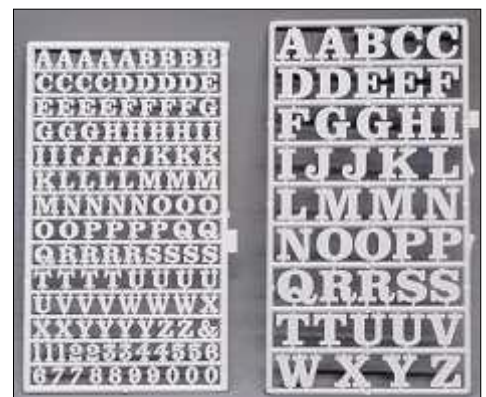
The Canopy, which is modular, consists of plastic injection mouldings, with a choice of solid or clear roof panels, which have been omitted in the picture to reveal the structural parts.

(Several kits can be used together if required, each is 896mm long, 180mm high, and 148mm wide. **SG1308** Solid roof kit, **SG1327** Clear roof kit.

Components are available separately; - **SG1323** Clear roof panel, **SG1324** Three support columns, **SG1325** Six (150mm) roof valences, **SG1326** Three roof trusses, **SG1328** Solid roof panel.

Slaters Plastic alphabets, make your own custom signs and name boards.

SL1107 13.5mm Lettering (2 Sprues) **SL1113** 7mm Lettering (1 Sprue)



KIPPO MODELS

A range of resin building kits suitable for both indoor and outdoor use and are made to be resistant to warping by the sun.

RAILWAY BUILDINGS

B-S0001 GWR Signal Box

A typical GWR Style Signal Box with finger jointed corners allowing a strong and aesthetically pleasing finish.

Height 300mm, Length 370mm, Width 210mm



B-S0002 LMS Signal Box

A wooden style signal box suitable for Standard Gauge and Narrow Gauge railways.

Height 270mm, Length 200mm, Width 130mm



B-T0001 Ticket Office/Waiting Room

Ticket office/waiting room kit.

Height 190mm, Length 220mm, Width 140mm



B-T0002 Ticket Office/Wating Room

Add detail to your station with Ticket office/Waiting room kit.

Height 190mm, Length 220mm, Width 140mm

***B-T0003* NBR Station Building**

Inspired by NBR station buildings in Fife. This kit is suitable for platforms 150mm to 200mm wide.

Height 230mm, Length 600mm, Width 140mm
(not including canopy)



***B-H0001* Lineside Hut**

Add detail to your station or goods yard with this lineside hut.

Height 190mm, Length 200mm, Width 130mm



***B-H0002* Double Door Platelayers Hut**

Height 130mm, Length 200mm, Width 140mm

***B-H0003* Platelayers Hut (Flat Roof)**

Height 130mm, Length 200mm, Width 140mm



***B-H0004* Platelayers Hut (Pitched roof)**

A typical brick built hut for use by the lineside or goods yard.

Height 190mm, Length 200mm, Width 130mm

B-T0005 Brick Toilet Block

Individual Ladies and Gentlemen resin signs with raised edging and letters in a cast iron style.

Height 190mm, Length 200mm, Width 130mm



B-W0001 WaterTower

Suitable for Standard Gauge and Narrow Gauge railways. Easy build with the main body cast as one piece.

Height 230mm, Length 80mm, Width 80mm

HOUSES AND SHOPS

B-C0001 Brick Terraced House - Half Relief

This house has a flush roof and guttering to allow joining of houses. Chimney stacks consist of 4 finger jointed parts and separate chimney pots. The windows have a separate sash which can be glued open.

Height 450mm, Length 170mm, Width 120mm



B-C0002 Brick Mid-Terraced House - Half Relief, Skeletal

This house has skeletal side walls and is designed to go in between 2 houses. If you want to build a row, you will need to buy the half relief single house. Height 450mm, Length 170mm, Width 120mm

***B-C0003* Brick Terraced House - Full Relief**

This house has a flush roof and guttering to allow joining of houses. Chimney stacks consist of 4 finger jointed parts and separate chimney pots. The windows have a separate sash which can be glued open.

Height 450mm, Length 170mm, Width 240mm



***B-C0004* Brick Mid-Terraced House - Full Relief, Skeletal**

This house has end skeletal walls and is designed to go in between end terrace houses.

Height 450mm, Length 170mm, Width 120mm

***B-B0019* Brick MidTerraced Shop**

This shop has a flush roof and guttering to allow joining of houses. Chimney stacks consist of 4 finger jointed parts and separate chimney pots. The windows have a separate sash which can be glued open. A choice of names are also included in this kit.

Height 450mm, Length 170mm, Width 250mm



GRS Fencing and Gates

SG1301 White Picket Fence with wicket gate parts 1540mm

SG1302 Brown Picket Fence only, 1540mm (not illustrated)

SG1306 White Fencing, 880mm (Flexible Kit to make platform ramp picket fencing or MR Style fencing- not illustrated)

SG1334 Post and Rail Fence, 1800mm (plastic posts and steel rail illustrated in the SG 1335 Cattle Dock)



SG1335 Cattle Dock

Plastic posts and bases, with steel rails, whitemetal gates, and resin water troughs



FG510 Victorian cast iron Gents Loo

Brass etch kit,
H 144mm,
L 168mm,
D 93mm



CA104 GWR Water Crane

Composite kit to accessorise your station or Loco yard.

Level Crossing Kit

Injection moulded white plastic parts, with metal reinforcing bars, and whitemetal Lamps.

SG1300 Level Crossing Gate Kit

SG1300D Level Crossing Gate Kit (twin pack for double track)

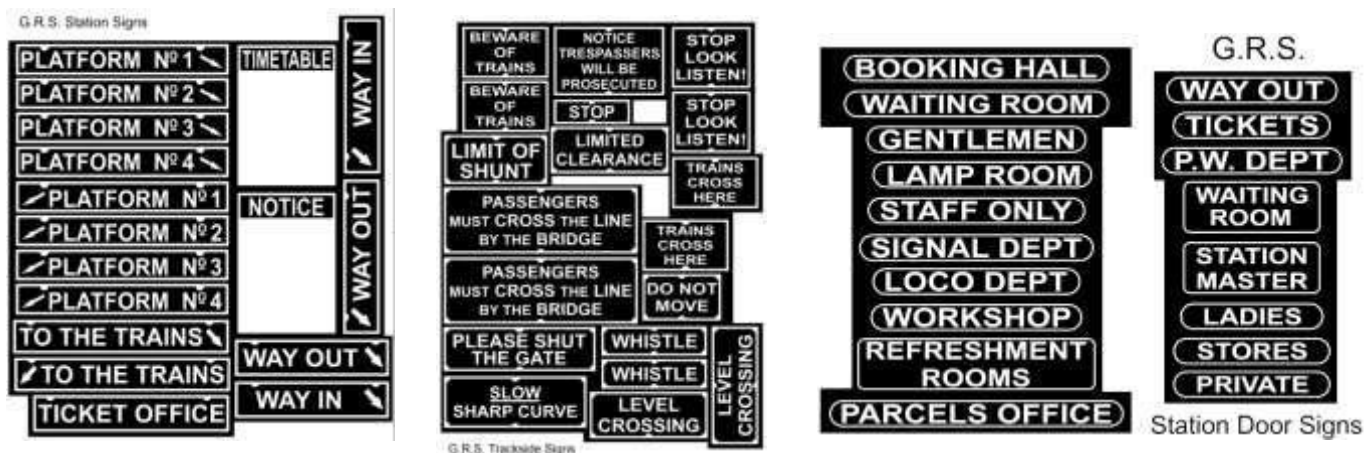


AM2333 1930 pattern GWR Station Seat

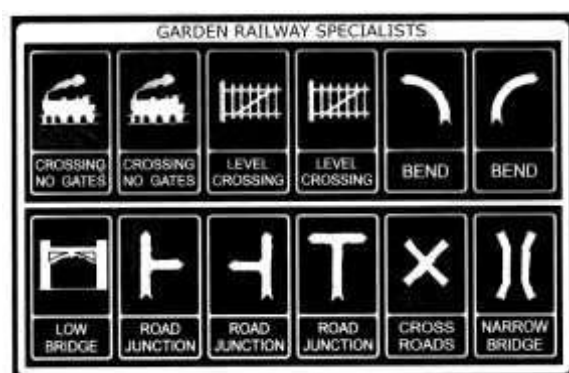
White-metal and wooden slats

Lineside and Station Accessories

Etched Brass sign Sheets - four separate sheets available *(N.B. Illustrations not to same scale)*



Superbly detailed signs that just require painting and mounting to give your model landscape that authentic look. Choose from **PPG250 Station Signs**, **PPG251 Station Door Signs**, **PPG252 Trackside Signs**, **PPG254 12 Pre-war type Road Signs**.



GWR Station Seats



Etched Brass and wooden Slats

FMG518 1910 pattern

FMG518T Pack of three 1910 pattern

FMG519 1930 pattern

FMG519T Pack of three 1930 pattern

AM503 Porters Trolley Kit

AM502 4Wheel Platform Trolley Kit

DG118 2 Conical Milk Churns



Trackwork & Accessories

Gauge 3 parts, 1:22.6 Scale, 13.5mm = 1 foot

Locomotive Parts

Key (?) -Qty, **WM**-Whitemetal, **R**-Resin, **S**-Steel, **B**-Brass, **C**-Copper, **NS**-Nickel Silver, **W**-Wood

Sprung Buffers

PDG2202 BR DMU (4) **WM/S**
PDG2204 SR/LNE (4) **B/S**

PDG2205 GW Taper (4) **B/S**
PDG2206 GW Parallel (4) **B/S**
PDG2221 Peckett Ind (4) **B/S**

Chimneys

AM2203 GW 2021 Pannier **WM**
AM2269 Dean Goods/57XX **WM**

Clacks in Pairs

AM2218 SR Terrier **WM**

Crossheads, Slide Bars and Brackets - Sets

CM1507 A pair for GW 1361 **NS**

Domes

FG2208 Dean Goods/GW 14XX **B**
FG2206 GW Pannier Flat Base **B**

Lubricators - Pairs

AM2286 LMS 4F **WM**

Pick Ups

FG407 Pick Up Holder(6) **P**
8313508 Brush Pick Ups 14mm (8)
831608 Brush Pick Ups 16mm (8)

Sandboxes

AM2273 GW 14XX (4) Front and Rear **WM**

Smokebox Doors & Handles

AM2265 GW 1361 Door & Dart 50mm Dia. **WM**
AM2276 Mid 1F/2F Door 55mm Dia. **WM**
AM2321 Dean Smoke Box Door 50mm Dia. **WM**
FG2205 GW Pannier Door & Dart 46mm Dia. **B**

Springs & Springs with Keeper Plates

AM2264 GWR Pannier Spring Leaf & Coil (6) **WM**

Safety Valves & Bonnets

FG2204 GW Pannier Bonnet (turned & polished) **B**
FG2210 LMS Ross Pop Safety Valves (2) **B**
PDG2222 Peckett Safety Valves **B**

Tank Vents

PDG2207 GW (2) **B**

Tank Fillers

AM2226 SR '02' (2) **WM**
AM2269 GW 14XX (4 Parts) (2) **WM**
AM2274 Mid 1F/2F (2) **WM**

Tool Boxes

AM2270 Mid 1F/2F (2) **WM**

Vacuum Pipe, Steam Pipe Sets

BE350 Vacuum Pipe (2) **B**
BE351 Steam Heat Pipe (2) **B**

Whistles

FG2211 LMS 3F/4F **B**
PDG2208 GW Large & Small Pair **B**

Tender/Tank Accessories

BE035A GW BK & Water Scoop - Standards (2) **B**
BE035B GW Sandbox Levers (2) **B**
AM2280 Mid 2F Dome (1) **WM**
AM2281 Mid 2F Vents (2) **WM**
AM2279 Midland axleboxes with springs (6) **WM**

Gauge 3 parts, 1:22.6 Scale, 13.5mm = 1 foot

Key (?)-Qty, **WM**-Whitemetal, **R**-Resin, **S**-Steel, **B**-Brass, **C**-Copper, **NS**-Nickel Silver, **W**-Wood

General Coach Parts

RC1607	GWR 'B' Set Seating (6) P
BE352	Door Handles T Shape (28) B
BE353	Door Handles Lever Ttype (10) B
SG1115	SR Coach Module 3rd Class P
SG1114	SR Coach Module 1st Class P
SG1103	Coach Seating 1st Class (6) P
SG1104	Coach Seating 3rd Class (4) P
PPG214	LMS Guards Van Ducket (pair) B/P
AM2313	SR Queen Post with Split Pin (4) WM
DG138	Torpedo Vent Large WM
SG1107	Torpedo Vents (20) P
SG1102	Shell Vents (24) P
PPG201	GW Siphon Strapping & Hinges Etch B
PPG203	Coach Door Vents (14) B
PPG207	Door Hinges (24) B

Coach Buffers - Sprung, sets of 4

PDG2301	SR/LSWR Buffer, Round Head B/S
DM2206	LNER Coach Buffer, Round Head B

Bogies, Wagon & Coach, pairs

SKG136	GWR Coach 9' Bogies inc. wheels S/WM
DG2080	GW Freight Bogies WM
DM254	Bogie Bolster Stanchion (8) B

Roofs, Wagon & Coach

SG1482	Collett Coach Roof Modules inc. Channel (1) P
SG1125	GW Van Roof P

Wagon Parts

SG1445	LMS Corrugated Van Ends (2) P
DG2096	GW Churchward Brake Hangers & Lever WM
DG147	Vacuum Cylinder Kit for 'Fitted' Wagons WM
SG1132	Tarpaulin Rail Fittings (pair) P
CM251	Brake Shoes RCH/Morton (4) R
CM252	Brake Shoes LMS Brake Van (8) R
CM253	Brake Shoes LMS/LNE/BR Brake Van (8) R
DG2097	Axlebox RCH, Spring & W Iron (4) WM

DG2091	Couplings 3 Link (pair) WM
DG2092	Couplings Instanter (pair) WM
DG2093	Couplings Screw (pair) WM
BE048	Non Working Screw Coupling (pair) B
BE048A	Non Working Screw Coupling (5 pairs) B

Wagon Buffers - sets of 4

DG2089	GW Self Contained Buffer, Sprung WM
DG2090	RCH Wagon Buffer, Sprung WM
DG2090L	RCH Wagon Buffer, Sprung Large Head WM

Collett Coach Parts

SKG130	Coach Ends and Corridor Connectors (2) R
SKG131	Pair Battery Boxes + Dynamo R
SKG132	Vacuum Cylinder (2) R/WM
SKG133	Screw Couplings Extra Long B
SKG134	Door Handles, Grab Handles, Bangers, Hinges B



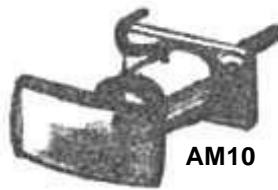
Narrow Gauge - General Parts

AM10 Centre Buffer (Screwfixing)

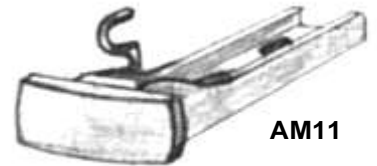
AM11 Centre Buffer (LGB coupling bar)

DG136 Vacuum Hoses (pair)

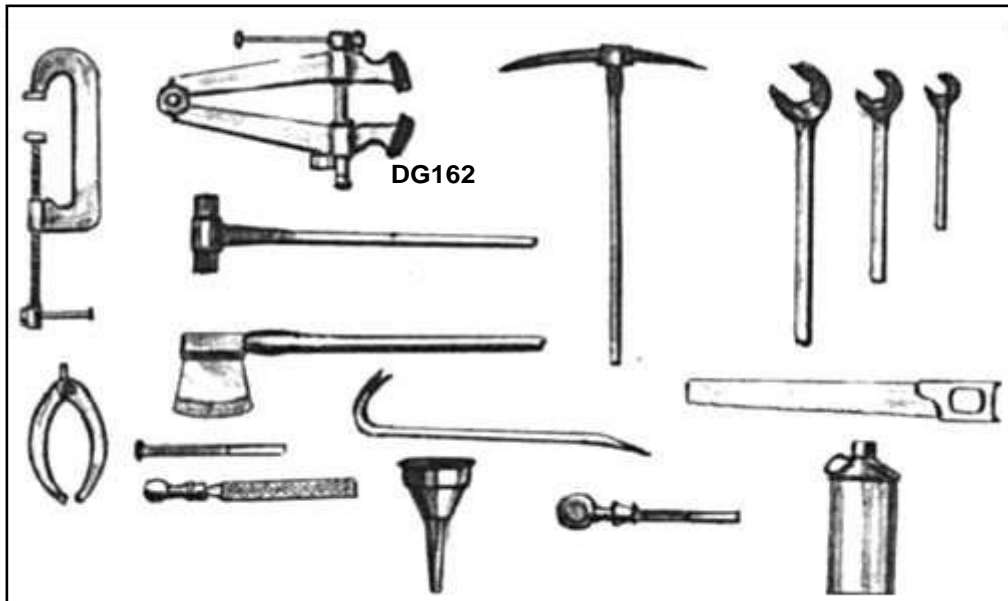
DG162 Engine Shed Detailing Pack



AM10



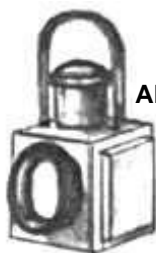
AM11



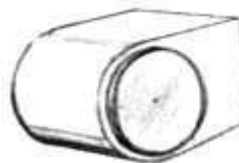
DG162



DG136



AM12



CM261



DG117

AM12 Loco Lamp (accepts LGB lamp holder)

DG117 Tender water tank filler

DG120 Tender axleguards (4)

DG133 Smokebox door and dart (33mm dia.)

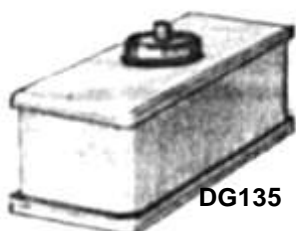
DG134 Smokebox door and dart (38mm dia.)

DG135 Rectangular sandboxes (pr.)

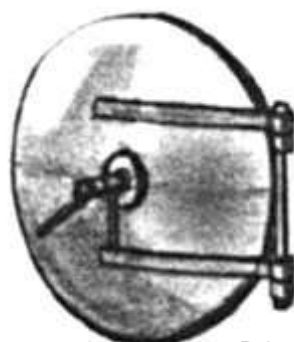
DG139 Loco leaf spring hangers



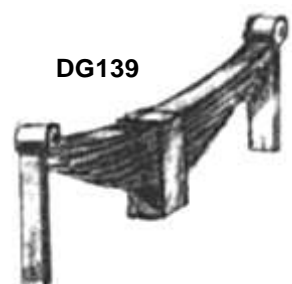
DG120



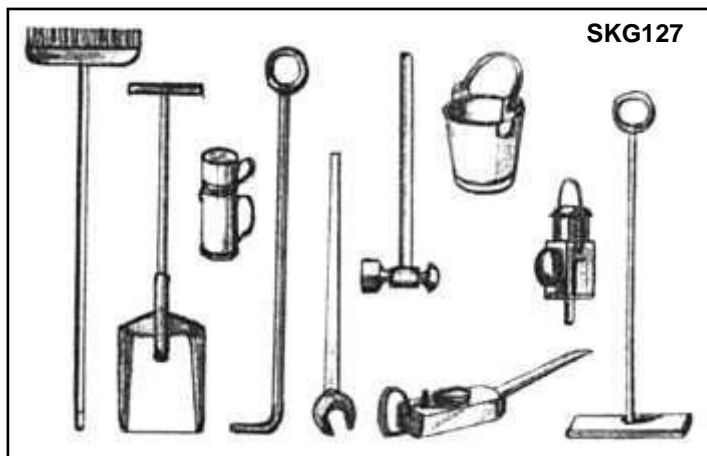
DG135



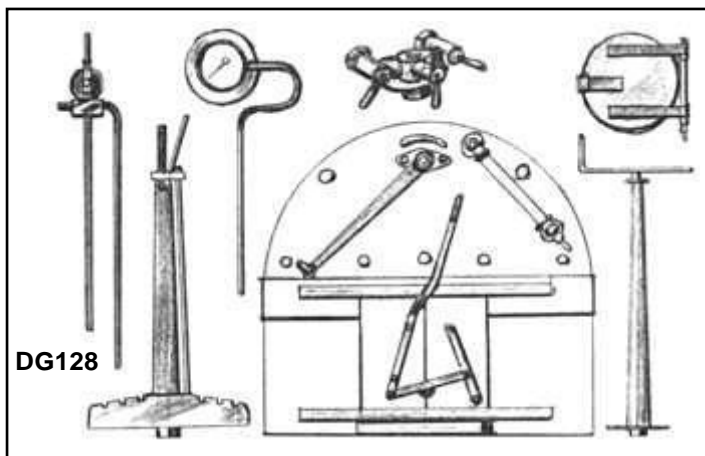
DG133/4



DG139



SKG127



DG128

SKG127 Loco detailing pack

DG128 Loco backplate detail

DG140 Loco lamps (pr.)

DG148 Loco chimney kit (13mm)

DG149 Loco chimney kit (10mm)

DG152 Loco tank filler hatches (pr.)

DG153 Loco cab steps (pr.)

DG160 Spectacle rings, 19mm dia. (4)

DG161 Spectacle rings, 21mm dia. (4)

DG164 Diesel bogie air brake cylinder set

DG165 Boiler check valves (pr.)

DG167 Ramsbottom safety valve and whistle

DG168 Ross Pop safety valve and whistle

DG169 Brake standard

DG171 Fairlie chimney

DG172 Spectacle rings, 25mm dia. (4)

DG173 Sandbox, square (pr.)

DG178 Westinghouse pump

DG179 Tank filler (pr.)

DG181 Turbo Generator

DG189 Handrail knobs (20)



DG140



DG148/9

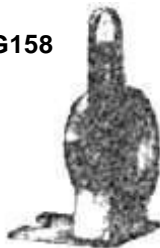


DG152



DG153

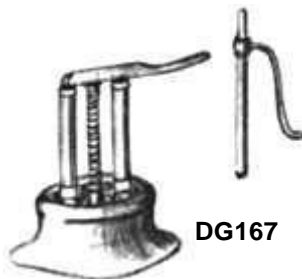
DG158



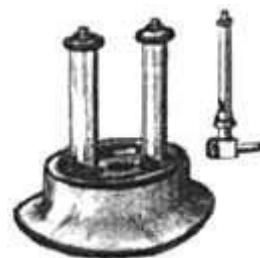
DG164



DG165



DG167



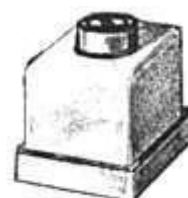
DG168



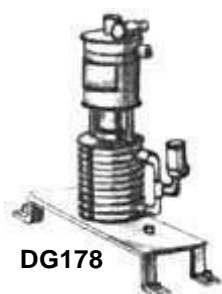
DG169



DG171



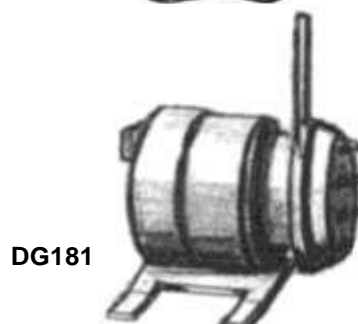
DG173



DG178



DG179



DG181



DG189

Rolling Stock Castings

DG121 Coach axleguards (4)

DG123 Wagon axleguards (4)

DG124 W&L Wagon axleguards (4)

DG156 L&B Vacuum Cylinder kit

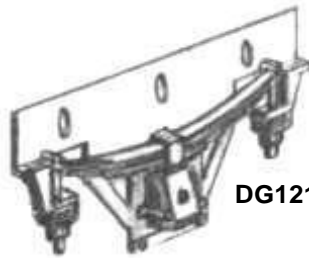
DG166 L&B 2-axle Wagon Chassis parts

DG170 L&B Freight Bogie (32 or 45 gauge)

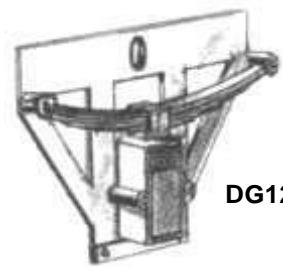
DG175 L&M Coach balcony steps (4)

DG200 Underframe detail pack for Accucraft L&B Wagons (vac. Cylinder, linkage, brake pull rods, brake lever & shoes)

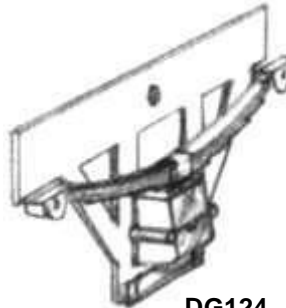
DG201 Battery box (pr)



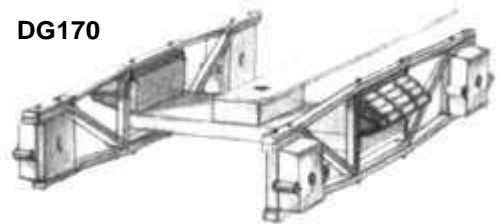
DG121



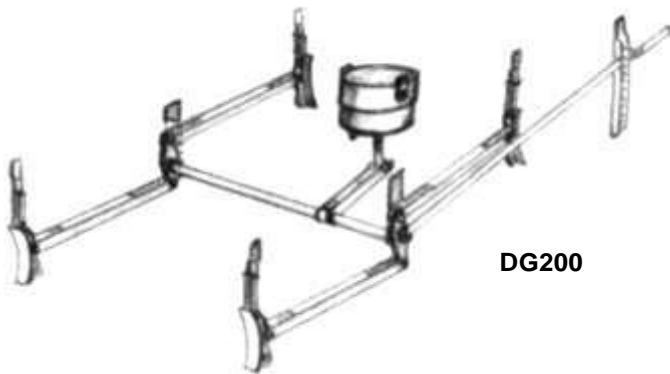
DG123



DG124



DG170



DG200



DG201



DG175

Brass Domes

FG007 Fairlie

FG011 Argyle



FG007



FG011

Roundhouse Brass Domes

RHDOM-BI Billy

RHDOM-R Russell

RHDOM-K Katie

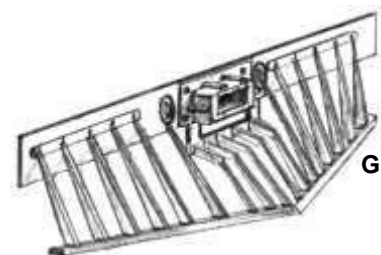
RHDOM-SL Silver Lady

RHDOM-M Millie

RHDOM-B Bertie

RHDOM-LA Lady Anne

RHDOM-A Atlantic

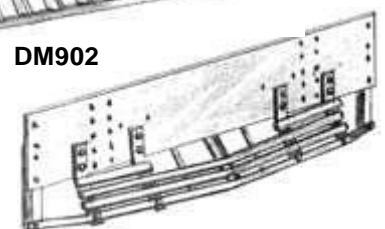


GRS067



DM254

DM902



TIE002

TIE003



Metal Parts

DM254 Stanchion for Bogie bolster, cast brass (8)

GRS067 LGB Mogul cow catcher, cast brass, 90x30mm

DM902 L&B cow catcher, cast brass, 105x35mm

TIE002 24mm diameter Brass Brake Shoes (4)

TIE003 20mm diameter Brass Brake Shoes (4)

FG260 Brass Handrail Knob, M2 threaded (10)

PPG202 Diesel louvres, brass etch (4)

PPG203 Coach door vents brass (14)

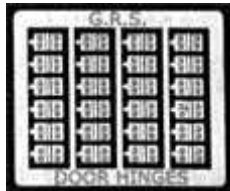
PPG207 Door hinges for Diesel bonnets, coal doors, etc, brass etch (24)

PPG209 Coach running board hangers, brass etch (16)

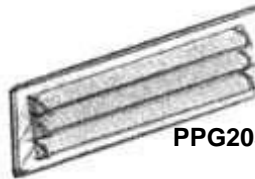
PPG211 Coach balcony railing & gates (pr.)



FG260



PPG207

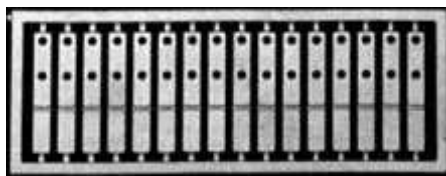


PPG203

PPG202



PPG209



PPG211



Coach & Wagon Plastic Parts

As Used in GRS L&B Kits.

SG1101 L&B Coach bogie kit 45mm or 32mm gauges

SG1102 Coach shell ventilators (20)

SG1103 Coach seating first class (pack of 6)

SG1104 Coach seating third class (4 lengths)

SG1108 Moulded roof support for fixing roof

SG1109 Coach roof for L&B rolling stock (570x105mm)

SG1110 Guards van double doors for passenger coach

SG1111 Guards van duckets for passenger guards van

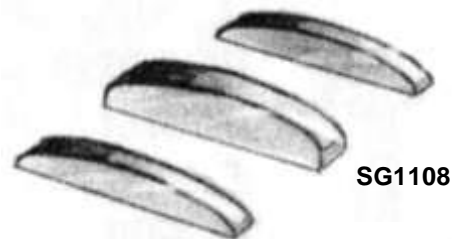
SG1112 Guards van ducket and doors for goods stock

SG1113 Observation panels, vacuum formed (set of 2)

SG1121 Gas lamp tops (6)

SG1122 Running board hangers for coach stock 3 types (16)

SG1123 Open wagon strapping



SG1108



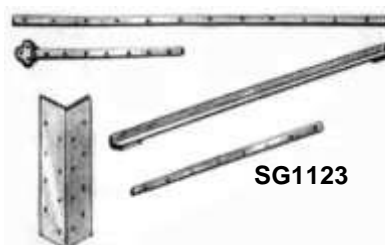
SG1111



SG1112



SG1121



SG1123

SG1122



SG1124 Van strapping

SG1126 Coach vacuum pipes, L&B style

SG1128 L&B Roof ventilators (pack of 6)

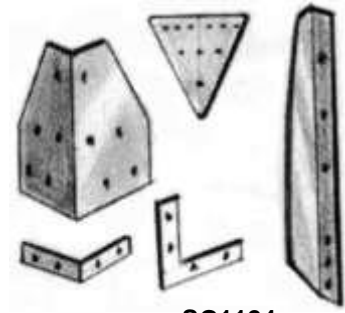
SG1130 Wheel bearings for L&B coach bogie & similar (16)

SG1131 Coach end steps (8)

SG1132 Tarpaulin rail fittings (pr.)

SG1136 W&L dome ended roof, length 535mm

SG1139 Coach dome ended roof, length 380mm



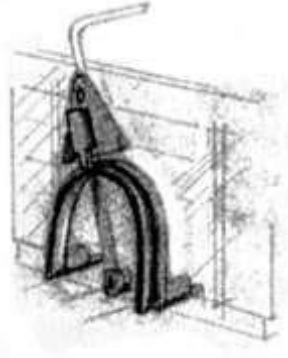
SG1124



SG1126



SG1128



SG1132



SG1131

DG101 L&BYard Crane

A kit of whitemetal parts that form an authentic non-working model of the yard crane in Pilton Yard, Barnstaple. Chain and full instructions are included.

DG100 L&B Water Column

An easy to build kit in whitemetal to make an authentic model.



DG101



DG100

DG193 Freelance Water Column



DG193

Loco Carrying Cases

Tough fibreboard foam-lined cases with strong, lockable catches, and comfortable carrying handles

NG101 26 x 9.5 x 7 ins.

NG103 19 x 9.5 x 7 ins.

NG112 36 x 5.5 x 6.75 ins.



NG101



NG103



NG112

Stonework

Most of these items have been discontinued, please check with us regarding our current stock availability.

Height 190mm, Length 410mm.

HG101 Stone Column

Height 200mm, Length 75mm, Width 60mm.



LCG35



LCG36



LCG37



LCG38



Standard Gauge Platform Edging

Straight Length 450mm, Ramp 250mm

LCG35 Brick finish straight section

LCG36 Brick finish ramp section (pair)

LCG37 Stone finish straight section

LCG38 Stone finish ramp section (pair)



HG104



HG107



LCG10

HG104 Stone Tunnel Mouth Height 280mm, Width 260mm, Portal Height 210mm, Portal Width 190mm.

HG107 Stone WingWall (Pair left & right) Height 280mm, Width 355mm.

LCG10 Slate Tunnel Mouth Height 330mm, Width 310mm, Portal Height 240mm, Portal Width 180mm.

LCG11 Double Slate Tunnel Mouth Height 317mm, Width 535mm, Portal Height 226mm, Portal Width 380mm.

LCG12 Slate WingWall (Pair left & right) Height 279mm, Width 356mm.



LCG11



LCG12



LCG17

HG103 Stone EmbankmentWalling

Height 280mm, Length 410mm.

LCG17 Small RetainingWalling

Height 60mm, Length 445mm.



HG103

CommercialTrack-Work

GRS can offer proprietary track from several suppliers; -

In 45mm Gauge we can supply the full range of LGB items, usually from stock. Constructed from code 330 Brass flat-bottomed rail this track is robust, simple to lay, and will last for many years even in the most demanding situations.

The alternative Peco G45 system is also stocked in depth, although the range available is much more limited. Made from Code 250 Nickel-Silver rail the Peco G45 Track presents a slightly more delicate appearance which some will prefer, albeit needing slightly more support when laid in the Garden when compared to the code 330 versions. (NB it is possible to join Peco and code 330 systems via special Peco SL-912 joiners)

Naturally we also supply Joiners both plain and insulated for all systems, and also Massoth rail clamps, which are unique in allowing track to be uncoupled vertically, convenient when it comes time to maintain Points.

For 32mm we supply Peco SM32 track, which again is Nickel-Silver, although in code 200 size. There is a better range of points available for this from Peco, but still many gaps such as crossovers, which is where our handmade track comes to your aid. Please note that our range of 32mm points are now discontinued so check our website for availability.

HandmadeTrack-Work

GRS offer a range of hand made Trackwork in 32mm, 45mm, and 63.5mm gauges. Constructed in either Peco code 250 or LGB code 332 rail. The range of Points, in radii not offered by other manufacturers, gives our customers a greatly increased choice in determining their track layout. In addition items such as Slips, Y-Points, and buffer stops are also in the range.

The track features hardwood sleepers, saturated in preservative, to which the rail is fixed using staples and solder. The resulting structure is strong, employs no non-conductive rail sections, i.e. frogs, and will give many years of trouble free service in the great British climate. Where 32mm items have to connect to code 200 rail, the flat bottomed 250 rail is slit at the end to accommodate the SL-810 Peco rail joiner and ensure that the rail head heights match.



IG149 45mm code 250 Peco rail

GRS 32mm Track (Discontinued - check for availability)

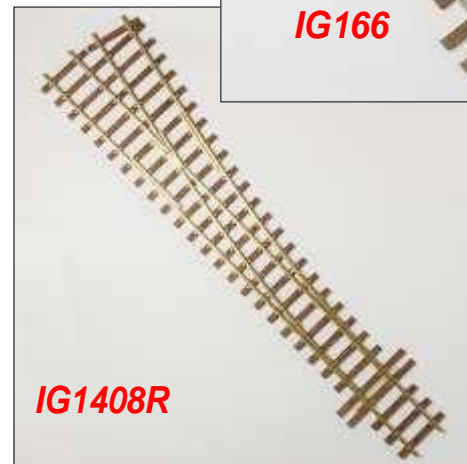
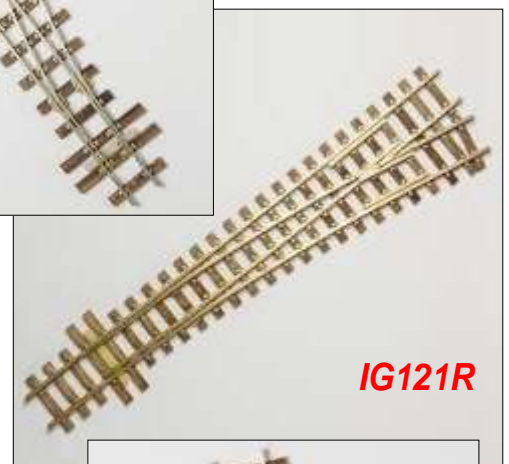
G32 LH Point Rad 2ft (Code 250 Rail)	IG151
G32 RH Point Rad 2ft (Code 250 Rail)	IG152
G32 LH Point Rad 2ft 6in (Code 250 Rail)	IG153
G32 RH Point Rad 2ft 6in (Code 250 Rail)	IG154
G32 LH Point Rad 4ft (Code 250 Rail)	IG155
G32 RH Point Rad 4ft (Code 250 Rail)	IG156

GRS 45mm Track

G45 LH Point Rad 6ft	IG100L
G45 Point RH Rad - 6ft	IG100R
G45 LH Point Rad 8ft	IG121L
G45 RH Point Rad 8ft	IG121R
G45 LH Point Rad 2ft 6ins (LGB R2)	IG122L
G45 RH Point Rad 2ft 6in (LGB R2)	IG122R
G45 LH Point Rad 2ft 6in (Code 250 Rail)	IG162
G45 'Y' Point Rad 2ft (Code 250 Rail)	IG166

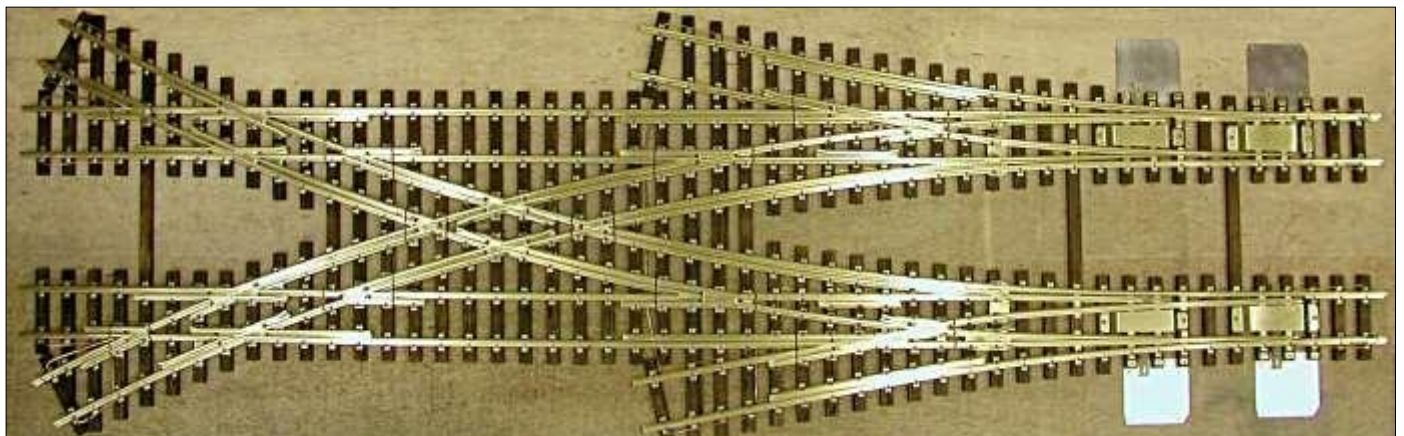
GRS 63.5mm Track

G64 LH Point Rad 8ft	IG1406L
G64 RH Point Rad 8ft	IG1406R
G64 'Y' Point	IG1407
G64 LH Point Rad 10ft	IG1408L
G64 RH Point Rad 10ft	IG1408R
G64 LH Point Rad 12ft	IG1410L
G64 RH Point Rad 12ft	IG1410R
G64 Sleeper Pack W/Joiners - 5yds	SG1400
G64 Sleeper Base - single	SG1400S
Brass Rail Code 330 - 1500mm	SG1402
G64 Buffer Stop Code 330	SG1404



CustomTrack-Work

As well as our standard range of GRS track-work we can also make bespoke items for those difficult situations, Curved turnouts, Slips-double or single, Crossovers, in fact just about anything that is geometrically possible - see our website for full details or ring and ask us to give you a quote.



OtherTrack Accessories



TIE123 8mm Throw Point Lever



TIE001 Lever Frame Kit



TIE004 Point Lever Kit - 8mm Throw



IG123 Point Lever Brass/Stainless Steel

NEW Rail Bender Kits

- TIE006** LGB Code 332 Rail
- TIE007** Tenmille Code 330 Rail
- TIE008** Peco Code 250 Rail
- TIE009** Peco Code 200 Rail

Rollers Only

- TIE010** LGB Code 332 Rail
- TIE011** Tenmille Code 330 Rail
- TIE012** Peco Code 250 Rail
- TIE013** Peco Code 200 Rail



Rail Bender Kits

- IG112** LGB
- IG113** Tenmille G
- IG114** Peco G
- IG115** Peco/Tenmille 32mm BH
- IG116** Tenmille FB (spare roller sets also available)

Rail Clamps

8100165 100 x Rail Clamps for LGB Track

8100151 50 x Rail Clamps for LGB Track

8100176 10 x Rail Clamps for LGB Track



Track Cleaning

GB060 Rubberised Abrasive Block

FG401 Metal head to hold 2 x GB060 (supplied) no handle

FG402 Metal head to hold 2 x GB060 (supplied) with long Handle



Modular Bridge Kits

Suitable for Gauge 1, G Scale, Gauge 3 and 16mm Narrow Gauge railways

Flexible “Mix & Match” modular bridges to allow you to design and fit to your requirements. “Flat Pack” Kits, ready to build as required. Manufactured in steel with a powder coated anthracite finish. Modules are available for both under truss and over truss bridges as well as walkways as required.

High Quality - Low price

Easy Build - Approx. 20 minute build time per module



TIE125 Under truss module

TIE126 Under truss arch module

TIE125 Under truss module



TIE125 Over truss module

TIE 128 Over truss arch module

TIE125 Over truss module

Dimensions: Modules are 400mm long x 230mm wide, 330mm wide with walkway
There is 216mm clear width on the deck

Photographs above show 3 modules + 3 walkway modules - 1200mm x 330mm



TIE125 Over/Under Truss Module



TIE126 Under Truss Arch Module



TIE128 Over Truss Arch Module



TIE129 2 x Walkway Modules



TIE127 Double Width Fixing Kit



One piece cast resin Containers

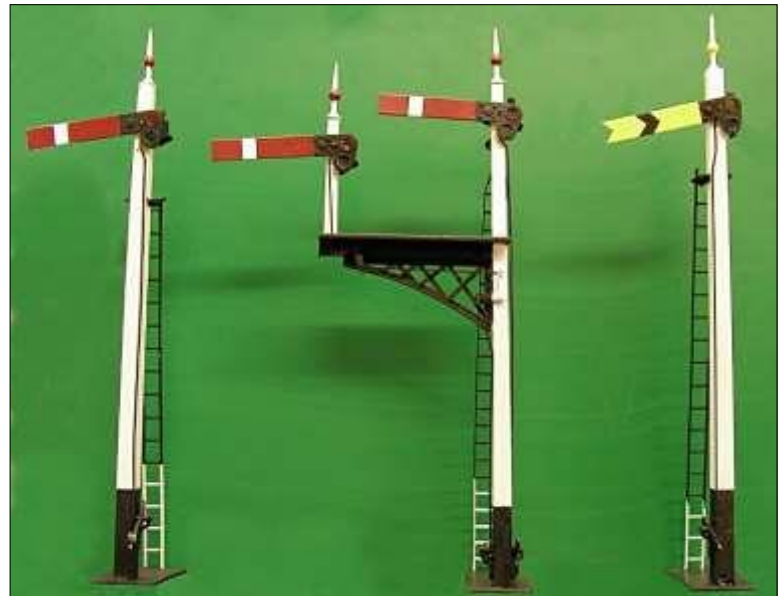
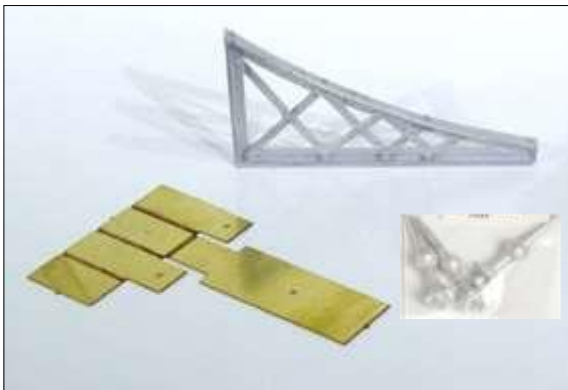
- CM201** Furniture Container **CM202** Detail pack for CM201 - Shackles, Hangers, Chains etc.
CM206 AF Insulated, 3ton **CM207** Detail pack for CM206 - Shackles, Hangers, Chains etc.

Signals

Lower Quadrant Signals - with Wooden Post

Kits consist of Tapered wooden posts, whit metal castings, brass wire and coloured plastic lenses. Easy and satisfying to build and paint in a choice of three versions.

- DG965** Home Signal Kit
DG966 Distant Signal Kit
DG967 Bracket Signal Kit



Signal Parts for the scratch-builder.

- PPG210** Post base
DG970 Bracket
PPG206 4 x Bell cranks
DG969 3 x Finials
FG235 Etched Ladder (290mm)





**SG1305
AA Box**

**Unpainted
resin kit**

Street Furniture - High Quality Die-cast models of British Classics

PRO263 Type 6 Telephone Box, **POB01** 1866 Penfold Letter Box, **POB03** Town & Country Type C "GR" Letter Box, **POB07** Standard Type A "EVILR" Letter Box (Without Sign), **POB13** Standard Type A "GR" Letter Box (with Sign), **POB18** Standard Type A with Stamp Machine.

54 x 26in Styrene Sheet (HIPS)

High quality material for scratch-builders of Locos, Rolling stock, or Buildings.
Available in Black or White (7 different thicknesses')

- 107222B** 54x26in x 20 thou (Approx. 0.5mm) Black
- 107232W** 54x26in x 20 thou (Approx. 0.5mm) White
- 107223B** 54x26in x 30 thou (Approx. 0.75mm) Black
- 107233W** 54x26in x 30 thou (Approx. 0.75mm) White
- 107225B** 54x26in x 40 thou (Approx. 1.0mm) Black
- 107235W** 54x26in x 40 thou (Approx. 1.0mm) White
- 107224B** 54x26in x 60 thou (Approx. 1.5mm) Black
- 107234W** 54x26in x 60 thou (Approx. 1.5mm) White
- 107227B** 54x26in x 80 thou (Approx. 2.0mm) Black
- 107236W** 54x26in x 80 thou (Approx. 2.0mm) White
- 107226B** 54x26in x 100 thou (Approx. 2.5mm) Black
- 107228B** 54x26in x 120 thou (Approx. 3.0mm) Black
- 107229W** 54x26in x 120 thou (Approx. 3.0mm) White



Please see grsuk.com or ring GRS on 01844-345158 for the latest prices on all GRS stock. Our website also shows a comprehensive list of accessories and RTR locos and rolling stock items when available.