

£1.00

40TH
ANNIVERSARY
2022



Building Kits

2021, v1

Station Studio, 6 Summerleys Road, Princes Risborough, Bucks, HP27 9DT

Tel: 01844 345158 Fax: 01844 274352

Email: sales@grsuk.com Web: www.grsuk.com

Yarwood Prototype Building Kits (Designed by David Yarwood.)

A range of unpainted buildings made from fibre-glass, resin and plastic.

YG601 Caersws Station

This superbly detailed model reproduces the authentic stone construction with slate roof. Also featured are finely etched brass bargeboards to the gable ends.

Height 300mm, Length 680mm, Width 135mm.



YG602 Watlington Station

The original building was of stone and knapped flint construction with a slate roof. The model recreates many of the fine features found in the original.

Height (inc. Chimney) 270mm, Length 442mm, Width 182mm.



YG629 Dinas Signal Box

The original building featured wooden weatherboard construction with a slate roof, faithfully reproduced on this model, along with detachable simulated stone base, allowing the signal box to be used as either a ground frame or platform version.

Height 265mm, Length (excluding porch) 185mm, Width 150mm.



YG631 Watlington Signal Box

The model features simulated vertical boarding and felted roof, and includes entrance steps for side doorway.

Height 215mm, Length 175mm, Width 165mm.

Lynton & Barnstaple Railway Buildings Kits

Due to their size in G Scale some are reduced to help enthusiasts with limited space.

YG603 Woody Bay Station

A well detailed model of the preserved L&B station built in Nuremberg style with interesting roof angles capturing the flavour of the prototype.

Height 275mm, Length 620mm, Width 305mm.





YG609 Chelfham Station Kit

A small station building of stone construction with a tiled roof and distinct barge boards.

Height 166mm, Length 323mm, Width 167mm.



YG615 Lynton Goods Shed

A typical stone and slate building with wooden doors and canopy. Reduced in length to only one loading bay instead of two. Height 265mm, Length 470mm, Width 320mm.

YG637 Pilton Signal Box (Freelance)

Timber frame building on a stone base. Tiled roof with 4-pane windows.



Height 235mm, Length 185mm, Width 160mm.

YG636 Barnstaple Signal Box

Timber frame building on a stone base. Slate roof with 6-pane windows.

Height 235mm, Length 185mm Width 160mm.



Freelance Building Kits

Station Halt

This building has a side shelter for passengers. Height 230mm, Length 310mm, Width 160mm.

YG612 Open Shelter Kit



YG625 Engine Shed with Water Tank

Gabled roof over a brick engine shed with climbing ivy and weathered all over.

Overall Height 290mm, Length (doors open) 410mm, Width 230mm, Entrance Width 130mm, Door Height 185mm.

YG617 Wooden Hut Kit

Finished with either, wooden walls and corrugated iron roof or simulated stone walls with felt type roof. Height 130mm, Length 170mm, Width 145mm.

YG618 Lineside Stone Hut Kit

YG619 Goods Office/Weighbridge Hut

A typical example of a small railway building constructed in stone and slate used for various purposes.

Height 240mm, Length 175mm, Width 145mm.

Height 240mm, Length 175mm, Width 145mm.

YG630 Loughborough Signal Box A faithful model of the GCR Box still being used by the heritage railway to this day, but equally typical of many Wood and Brick structures used all over the UK. Height 260mm, Length 365mm, Width 160mm.



YG670 Ticket Hut & Shelter

Manufactured by David Yarwood from exactly the same materials as the kits, but supplied built and painted.



YG665 Water Tower 75mm x 75mm x 268mm

YG666 Signal Box with Steps 185mm x 115mm x 280mm

YG667 Signal Box Small 165mm x 110mm x 190mm

YG668 Ticket Office 160mm x 130mm x 150mm

YG670 Ticket Hut & Shelter 290mm x 130mm x 150mm



YG671 Shelter 160mm x 130mm x 150mm

YG672 Platform Signal Box 120mm x 110mm x 175mm



British Outline Building Kits

This range of kit is designed to create the atmosphere of railway buildings in all the areas of Great Britain. They are robustly made from fibre-glass resin, are weatherproof and easy to assemble and paint. There is a great deal of detail, which will stand up to close inspection. Suitable for narrow or standard gauge.

BO05 Gresford Station (Stone)

Based on the prototype this station has several interesting architectural features including a gabled roof, and end bay window. Height 285mm, Length 560mm, Width 240mm.

BO06 Evergreen Station (Stone)

A typical small English design built in stone, a smaller version of Gresford but without canopies. Height 275mm, Length 540mm, Width 230mm.



BO07 Station Annex (Stone)

This small annex complete with interconnecting wall section **could be used to upgrade your station's facilities or as a porter's office etc. Made to match Evergreen Station.**

Height 225mm, Length 195mm, Width 170mm.



BO09 Small Country Station (Brick)

A typical small English design.

Height 270mm, Length 380mm, Width 240mm.



BO10 Country Station (Brick)

This station may be found from the commuter belts of London, to the countryside of Wales. A small selection of name boards and signs is supplied. The platform canopy is removable for Winter storage.



Height 350mm, Length 540mm, Width 290mm.

BO11 Station Waiting Room/Porters Hut/Toilets

An addition to the station or a small building on its own, perhaps a Crossing Keepers Hut, complete with outside chimney breast and tall chimney. Choice of signs supplied.

Height 260mm, Length 180mm, Width 170mm.

BO22 Station Terminus Over-Canopy

This imposing over-canopy is typical of those found at larger terminus stations and is dated **around the 1960's so has a more modern** image. Produced in a brick finish to match BB10.

Height 320mm, Length 540mm, Width 55mm.

BO17 Footbridge

A concrete type footbridge with brick stairs similar to those found on many British railways. Length 510mm, Overall Height 2145mm, Length of Staircase 150mm, Width of Staircase 69mm, Track Clearance Height 170mm.





PPG205 GWR Type Lattice Footbridge

Suitable for double track. Flat packed etched brass with plastic supporting columns.

Decking and steps etched to represent wooden planking as used on prototype. Rivet detail included on vertical side frames. Easy fold up construction mainly bolted with minimal soldering required. Footprint 715 x 305mm. Width Between Staircases 560mm, Centre Clearance Height 210mm.

BO12 Signal Box (Brick)

A typical design to be found almost anywhere. The kit comes with a choice of corrugated tin or slate/tiled roof and brick or metal chimney. The windows can be assembled open or closed swivelling, tilted or sliding. This same versatile kit allows several variations around your railway. Name boards supplied.

Height 310mm, Length 190mm, Width 135mm.

Goods Office

Typical of the 'found everywhere' office/stores – this one might be off the end of Newbury Racecourse GWR station anytime 1900-1960. Tin roof, brick and metal chimneys included.

Height 250mm, Length 180mm, Width 155mm.

BO13 Goods Office (Brick)

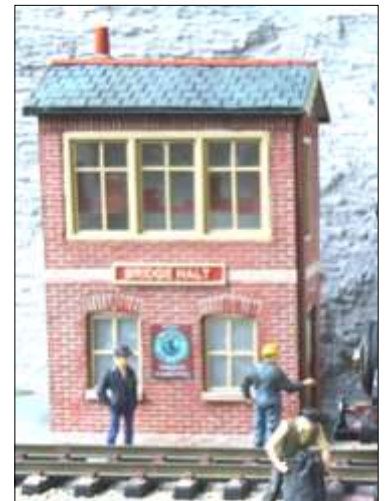
BO21 Goods Office (Stone)

BO14 Signal Box & Goods Office Set (One each of BO12 Signal Box & BO13 Goods Office)

BO16 Junction Signal Box

A typical medium sized signal box, built in brick with slate roof and outside stairs. The latter can be as illustrated or parts are included to make an alternative wooden staircase.

Height 320mm, Length 205mm, Width 170mm.





BO18 Water Tower

A typical rectangular, brick based, metal tanked water tower found in profusion all over the British Railway system at one time. Height 310mm, Length 190mm, Width 110mm.

BO23 Lineside Hut/Small Office

Small common-place building with tin roof used as yard offices, shed offices, paint stores, crossing keepers huts, etc.

Height 144mm, Length 120mm, Width 85mm.



BO19 Engine Shed

Typical brick built Engine Shed. A typical design of single bay shed to be found anywhere in the British Railway scene. Height 280mm, Length 362mm, Width 220mm. (Also **BO75** Double length version)

BO70 Engine Shed Extra Height Kit

(Eight components, moulded in stone finish to give extra 25mm height to Engine Shed **BO19**)



BO20 Goods Shed

Typical brick built Goods Shed that was found over the entire British branch line railway scene.

Height 270mm, Length 362mm, Width 220mm.

BO71 Goods Shed Extra Height

A kit of nine components, moulded in stone finish, to give extra 25mm height to all walls of Goods Shed **BO20**. A set of additional steps are also included.

BO56 Station Garage

This typical motor garage has been converted from the old horse stables adjacent to the coal yard. Height 190mm, Length 240mm, Width 170mm.



BO50 Diesel Refuelling Point

A common sight for any railway running diesel locomotives. Diesels can't do without them!

Height 150mm, Length 185mm, Width 80mm.



BO55 Station Coal Yard Office

Hundreds of these offices were to be found in goods yards all over England.

Height 190mm, Length 180mm, Width 160mm.

(Note: Coal sacks cast in resin available separately)



BO61 Complete Halt Kit

Complete narrow gauge kit of Open Halt, Ground Frame, Flower Bed and Water Tank.

BO61A as **BO61** but with 16mm Doors

BO65 Bridgend Halt

A narrow gauge signal box mounted on a stone base with slate roof, wood planking walls and gable end tile hanging. Suitable for 16mm. Height 210mm, Length 150mm, Width 150mm.



BO66 Narrow Gauge Halt and Shelter

A narrow gauge waiting room and shelter with post box let into the wall and a bench seat in the waiting shelter.

Height 210mm, Length 250mm, Width 205mm.



BO76 Sign & flower bed

BO67 Narrow Gauge Water Tank

A narrow gauge round water tank mounted on stone walls and a brick plinth complete with door (non-operational) for access beneath tank.

Height 215mm, Length 135mm, Width 80mm.



BO68 Coaling Stage & Sand Store

A two part kit comprising coaling stage and sand store, moulded in resin, suitable for a small engine stabling point.

Height 85mm, Length 350mm, Width 135mm.



BO69 Weighbridge

A weighbridge was a common feature in railway freight yards until fairly recent times. The resin kit is supplied with weighbridge building, weighing plate, gutters, drain pipe and coal sack. The approach to the weighing plate is cast in cobbled stone. A cast 'Weighbridge' sign is included and a 'Coal & Scrap Merchants' sign is moulded into the rear wall.

Weighbridge Hut Base 300 x 150mm, Weighbridge Plate 320 x 140mm. Kit also includes a length of rail for edging of the weighbridge plate.



BO72 Platelayer's Wooden Hut Kit

A kit of 6 resin parts with hinged roof. The building reproduces the gangers' life, the scythe for cutting the embankment grass and sharpening wheel. Typical rubbish lies on the roof and shutters cover the windows.

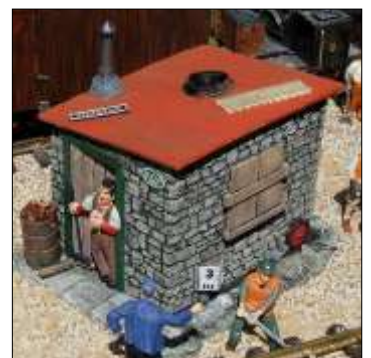
Height 115mm (excluding chimney), Base 210 x 140mm



BO73 Platelayer's Stone Hut Kit

A kit of 6 resin parts with hinged corrugated iron roof. Fire in disused oil drum is adjacent to door. Typical rubbish lies on the roof and wooden shutters cover the windows.

Height 135mm (excluding chimney), Base 200 x 170mm.



Railway Terraced Cottages

Typical of the Signaller's or Crossing Keeper's dwelling, this standalone kit can also be formed into any number of terraced houses, as seen in railway towns such as Reading, Swindon, Crewe, Doncaster etc. Street names supplied.

Height 330mm, Length 183mm, Full Relief Width 156mm, Half Relief Width 82mm.

BO30 Terraced Cottage (Brick)

BO31 Terraced Cottage (Brick/Flint)

BO38 Terraced Cottage (Stone)

BO45 ½ Relief Terraced Cottage (Brick)

BO46 ½ Relief Terraced Cottage (Brick/Flint)

BO47 ½ Relief Terraced Cottage (Stone)

BO32 ½ Relief Terrace Cottage x 2 (Brick)

BO37 ½ Relief Terrace Cottage x 2 (Brick/Flint)

BO39 ½ Relief Terrace Cottage x 2 (Stone)

BO49 ½ Relief Terraced Cottage (Inside Corner)

BO33 ½ Relief Terraced Cottages with Backyards



Typical of all railway approaches to industrial towns. The rows and rows of backyards typified in television's **Coronation Street**. Street names supplied.

Height 330mm, Length 360mm, Width 220mm.

BO15 Station Master's House

This kit consists of a Railway Terraced Cottage (**BO30**) with the centre part of the backyard extension of **BO33** attached to the rear.

Height 330mm, Length 183mm, Width 315mm.



BO64 Waiting/Porters Hut

BO63 Lineside hut



Height 180mm,

Length 180mm, Width 150mm.



BO36 ½ Relief Corner Shop

Height 325mm, Length 250mm, Depth 80mm.

Corner Pub ‘The Railway Tavern’

Typical brick built English pub. The kit can be used with the cottages to form a corner at the

end of a terrace. Available in full or half relief.

Height 325mm, Length 250mm, Width 250mm. 80mm.

BO34 Corner Pub

BO35 ½ Relief Corner Pub

Terraced Shops

A variety of brick built terraced building kits that can be placed together or mixed with terraced cottages (see diagram above).

BO51 Terraced Shop

BO52 ½ Relief Terraced Shop

BO53 Double Fronted Terraced Shop

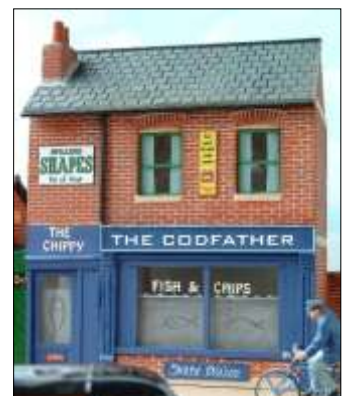
BO54 ½ Relief Double Fronted Terraced Shop



BO60 The Codfather Fish & Chip Shop

Brick built Fish & Chip shop which can be placed together with other shops or incorporated into the range of terraced cottages.

Height 330mm, Length 270mm, Width 156mm.



BO57 Welsh Farm Cottage

A typical farm labourer’s

stone cottage with slate roof from North Wales. The cottage has a porch and a lean-to for wood etc. It can be finished in a number of styles to give variation.

Height 190mm, Length 260mm, Width 146mm.



BO59 Terraced Farm Cottages

Similar to the Welsh Farm Cottage, but now available as a terraced set. Complete with a lean-to at the rear. Height 200mm, Length 500mm, Width 146mm plus 80mm lean-to.



BO58 Black Boy Inn

15th Century Inn based on a real pub in Caernarvon dating from 1922 and known locally as The Bachgen Du. This resin cast kit has over twenty components, and is well detailed including window boxes and hanging baskets.

Height 300mm, Length 600mm, Width 200mm.



BO40 English Church

A typical random stone church moulded in resin. Complete with tower and optional spire. Printed glazing is included.

Height 340mm, (with spire 535mm), Length 380mm, Width 245mm.

BO41 Windmill

Based on the preserved smock mill at Lacey Green in Buckinghamshire.

Height 480mm, Height to top sail 770mm, Width 300mm.



BO78 Watermill

A typical country overshot watermill with turning wheel. Just add a stream!

Height 480mm, Height to top sail 770mm, Width 300mm.



BO44

Thatched Cottage

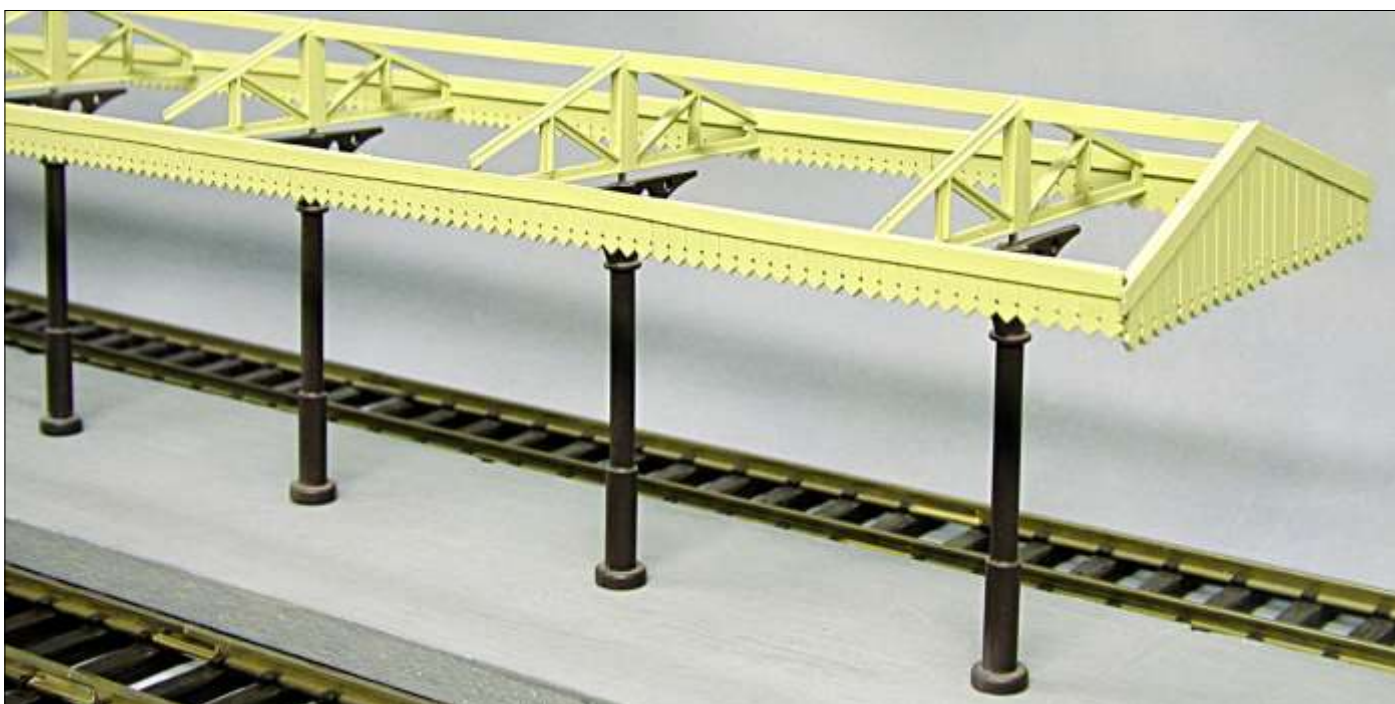
A typical half timbered cottage,

Height 340mm,
Length 300mm,
Width 200mm.

(Also **BO43** Terraced cottages, as BO44, but 490mm wide)



Station Canopy



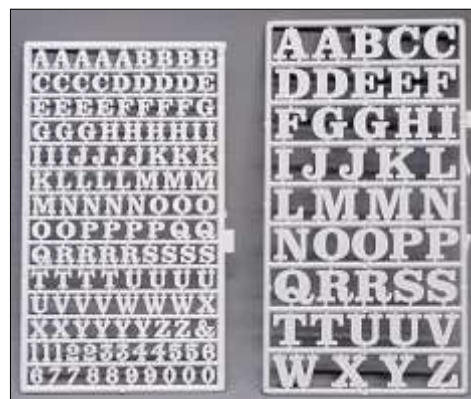
The Canopy, which is modular, consists of plastic injection mouldings, with a choice of solid or clear roof panels, which have been omitted in the picture to reveal the structural parts.

(Several kits can be used together if required, each is 896mm long, 180mm high, and 148mm wide. **SG1308** Solid roof kit, **SG1327** Clear roof kit.

Components are available separately; - **SG1323** Clear roof panel, **SG1324** Three support columns, **SG1325** Six (150mm) roof valences, **SG1326** Three roof trusses, **SG1328** Solid roof panel.

Slaters Plastic alphabets, make your own custom signs and name boards.

SL1107 13.5mm Lettering (2 Sprues) **SL1113** 7mm Lettering (1 Sprue)



KIPPO MODELS

A range of resin building kits suitable for both indoor and outdoor use and are made to be resistant to warping by the sun.

RAILWAY BUILDINGS

B-S0001 GWR Signal Box

A typical GWR Style Signal Box with finger jointed corners allowing a strong and aesthetically pleasing finish.

Height 300mm, Length 370mm, Width 210mm



B-S0002 LMS Signal Box

A wooden style signal box suitable for Standard Gauge and Narrow Gauge railways.

Height 270mm, Length 200mm, Width 130mm



B-T0001 Ticket Office/Waiting Room

Ticket office/waiting room kit.

Height 190mm, Length 220mm, Width 140mm



B-T0002 Ticket Office/Waiting Room

Add detail to your station with Ticket office/Waiting room kit.

Height 190mm, Length 220mm, Width 140mm

B-T0003 NBR Station Building

Inspired by NBR station buildings in Fife. This kit is suitable for platforms 150mm to 200mm wide.

Height 230mm, Length 600mm, Width 140mm (not including canopy)



B-H0001 Lineside Hut

Add detail to your station or goods yard with this lineside hut.

Height 190mm, Length 200mm, Width 130mm



B-H0002 Double Door Platelayers Hut

Height 130mm, Length 200mm, Width 140mm

B-H0003 Platelayers Hut (Flat Roof)

Height 130mm, Length 200mm, Width 140mm



B-H0004 Platelayers Hut (Pitched roof)

A typical brick built hut for use by the lineside or goods yard.

Height 190mm, Length 200mm, Width 130mm

B-T0005 Brick Toilet Block

Individual Ladies and Gentlemen resin signs with raised edging and letters in a cast iron style.

Height 190mm, Length 200mm, Width 130mm



B-W0001 Water Tower

Suitable for Standard Gauge and Narrow Gauge railways. Easy build with the main body cast as one piece.

Height 230mm, Length 80mm, Width 80mm

HOUSES AND SHOPS

B-C0001 Brick Terraced House - Half Relief

This house has a flush roof and guttering to allow joining of houses. Chimney stacks consist of 4 finger jointed parts and separate chimney pots.

The windows have a separate sash which can be glued open.

Height 450mm, Length 170mm, Width 120mm



B-C0002 Brick Mid-Terraced House - Half Relief, Skeletal

This house has skeletal side walls and is designed to go in between 2 houses. If you want to build a row, you will need to buy the half relief single house. Height 450mm, Length 170mm, Width 120mm

B-C0003 Brick Terraced House

- Full Relief

This house has a flush roof and guttering to allow joining of houses. Chimney stacks consist of 4 finger jointed parts and separate chimney pots. The windows have a separate sash which can be glued open.

Height 450mm, Length 170mm, Width 240mm



B-C0004 Brick Mid-Terraced House - Full Relief, Skeletal

This house has end skeletal walls and is designed to go in between end terrace houses.

Height 450mm, Length 170mm, Width 120mm

B-B0019 Brick Mid Terraced Shop

This shop has a flush roof and guttering to allow joining of houses. Chimney stacks consist of 4 finger jointed parts and separate chimney pots. The windows have a separate sash which can be glued open. A choice of names are also included in this kit.

Height 450mm, Length 170mm, Width 250mm



GRS Fencing and Gates

SG1301 White Picket Fence with wicket gate parts 1540mm

SG1302 Brown Picket Fence only, 1540mm (not illustrated)

SG1306 White Fencing, 880mm (Flexible Kit to make platform ramp picket fencing or MR Style fencing- not illustrated)

SG1334 Post and Rail Fence, 1800mm (plastic posts and steel rail illustrated in the SG 1335 Cattle Dock)



SG1335 Cattle Dock

Plastic posts and bases, with steel rails, whitemetal gates, and resin water troughs



FG510 Victorian cast iron Gents Loo

Brass etch kit,
H 144mm,
L 168mm,
D 93mm



CA104 GWR Water Crane

SA102 Water tower with fire devil



Level Crossing Kit

Injection moulded white plastic parts, with metal reinforcing bars, and whitemetal Lamps.

SG1300 Level Crossing Gate Kit

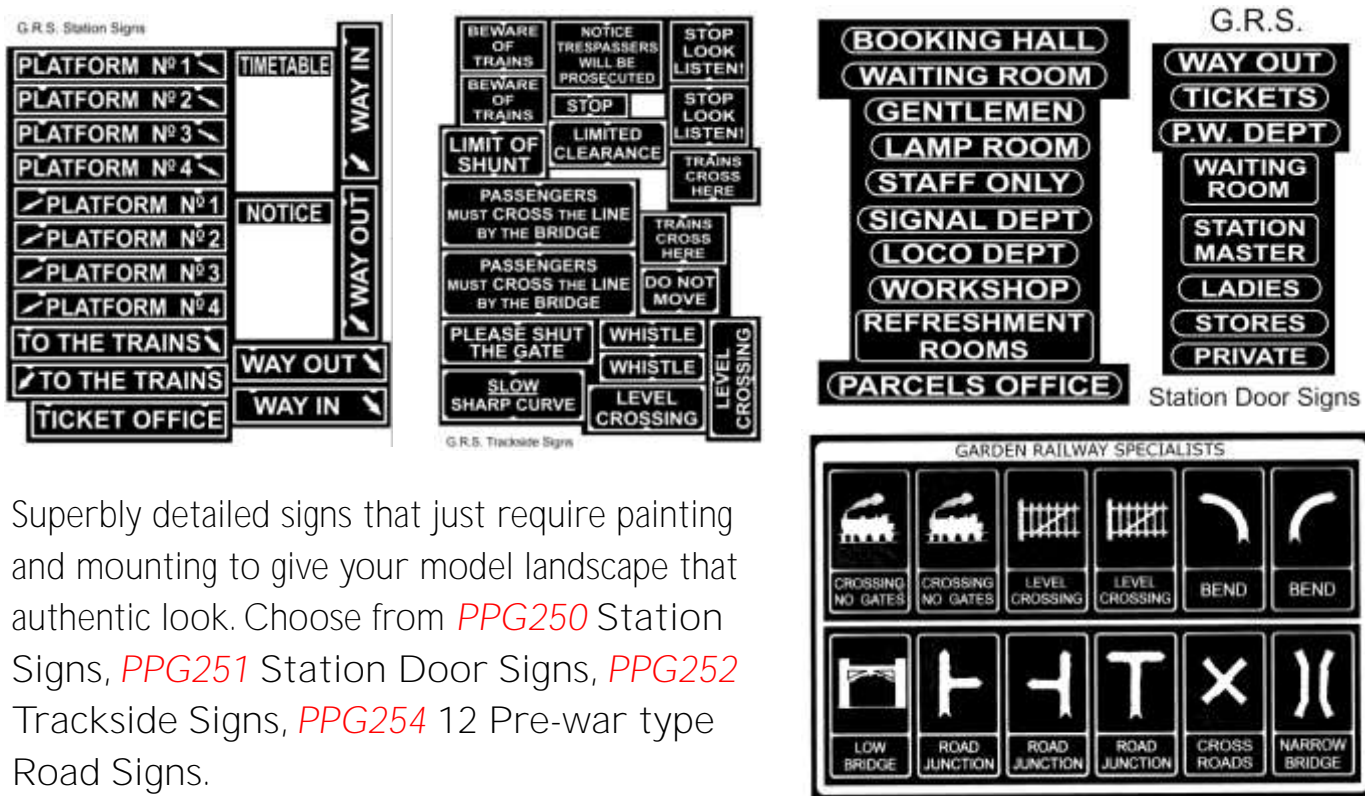
SG1300D Level Crossing Gate Kit (twin pack for double track)



Composite kits to accessorise your station or Loco yard.

Lineside and Station Accessories

Etched Brass sign Sheets - four separate sheets available (N.B. Illustrations not to same scale)



Superbly detailed signs that just require painting and mounting to give your model landscape that authentic look. Choose from [PPG250](#) Station Signs, [PPG251](#) Station Door Signs, [PPG252](#) Trackside Signs, [PPG254](#) 12 Pre-war type Road Signs.

GWR Station Seats



Etched Brass and wooden Slats

[FMG518](#) 1910 pattern [FMG518T](#) Pack of three 1910 pattern

[FMG519](#) 1930 pattern [FMG519T](#) Pack of three 1930 pattern

[AM503](#) Porters Trolley Kit

[AM502](#) 4 Wheel Platform Trolley Kit

[DG118](#) 2 Conical Milk Churns

[DG119](#) 2 Straight Milk Churns



Pricing Guide

Please see grsuk.com or ring GRS on 01844-345158 for the latest prices on all GRS stock. The items covered by this Catalogue have the following price ranges as of May 2021. Building Kits £28.00 - £155.52